

INOFLOOR WORLDWIDE LLC

Ino floor

HETEROGENEOUS VINYL FLOOR  
PISO VINÍLICO HETEROGÉNEO

Hospitals  
Airports  
Laboratories  
Libraries  
Office buildings  
Restaurants  
Schools

HIGH MOUNTAIN

SERIES

**INDOOR SPORTS VINYL FLOORING** 



4.5-6.0mm Green



4.5-6.0mm Blue



4.5-6.0mm Gray



4.5-6.0mm Green



4.5-6.0mm Wood 01



4.5-6.0mm Wood 02

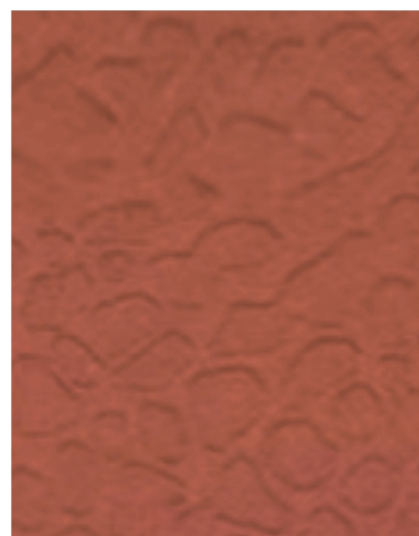
**OUTDOOR SPORTS VINYL FLOORING** 



4.5-6.0mm Green



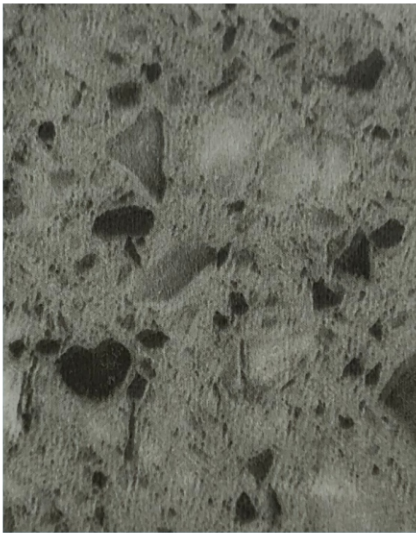
4.5-6.0mm Blue



4.5-6.0mm Red

HETEROGENEOUS VINYL FLOOR  
PISO VINÍLICO HETEROGÉNEO

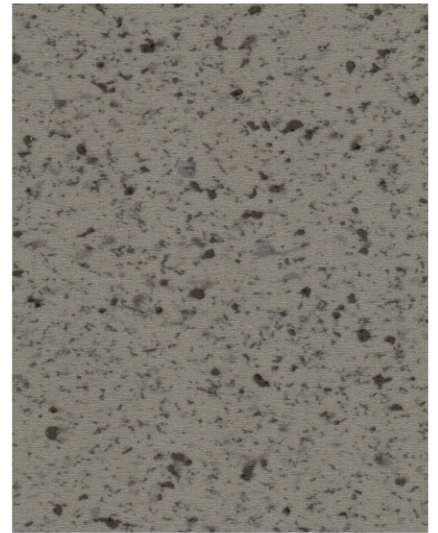
Size : 2.0mm(T) X 2.0m(W) X 20m(L)



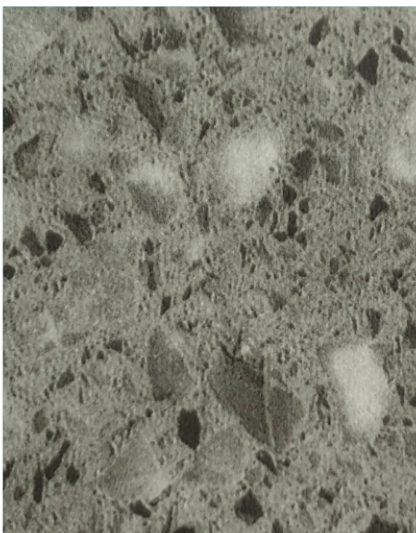
MT-1001



MT-32501



MT-20949



MT-1002



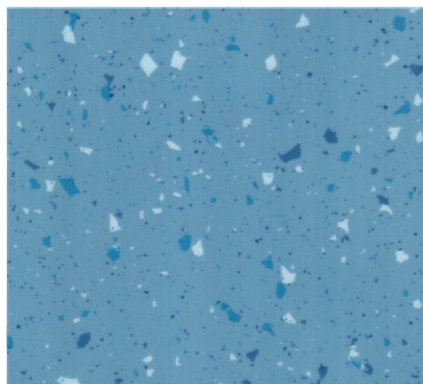
MT-32502



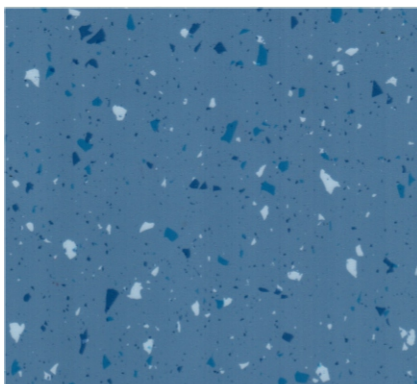
MT-32504

**HETEROGENEOUS VINYL FLOOR**  
**PISO VINÍLICO HETEROGÉNEO**

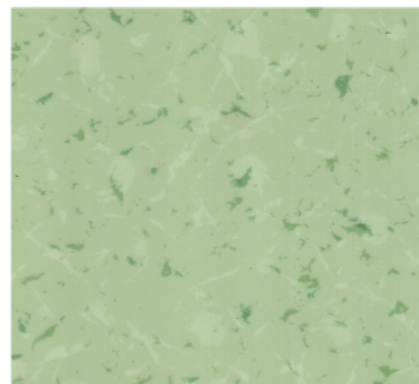
Size : 2.0mm(T) X 2.0m(W) X 20m(L)



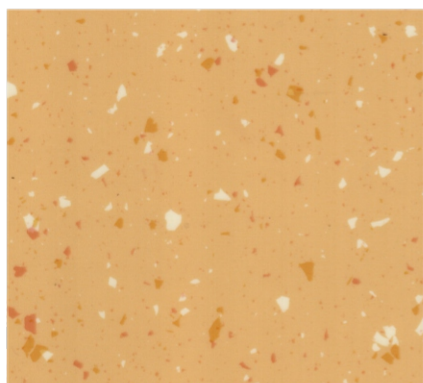
MT-27110



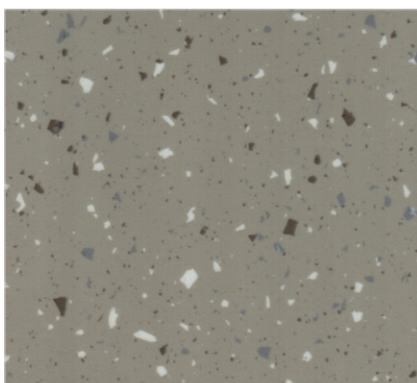
MT-27111



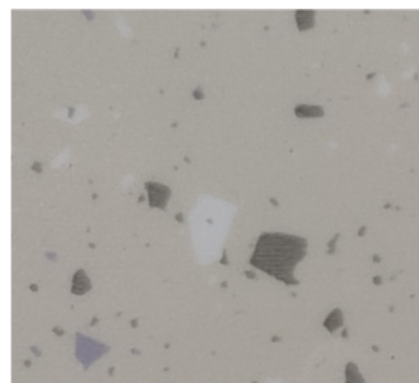
MT-25203



MT-27113



MT-27112



MT-20703



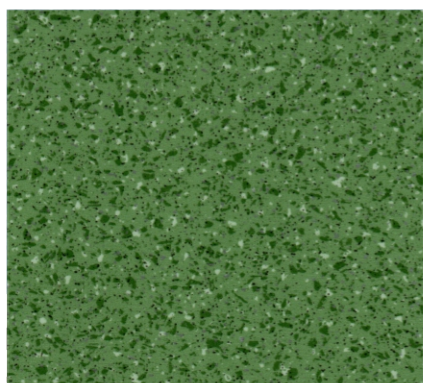
MT-25301



MT-25302



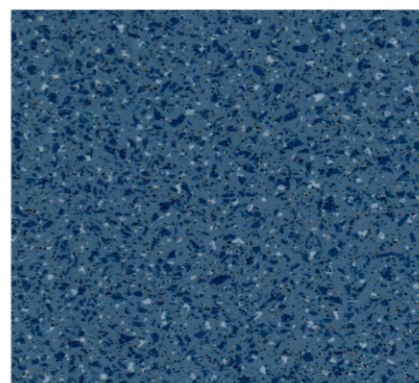
MT-25303



MT-25309



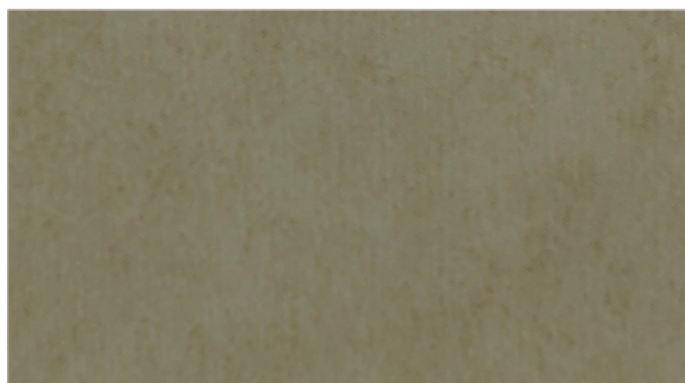
MT-25310



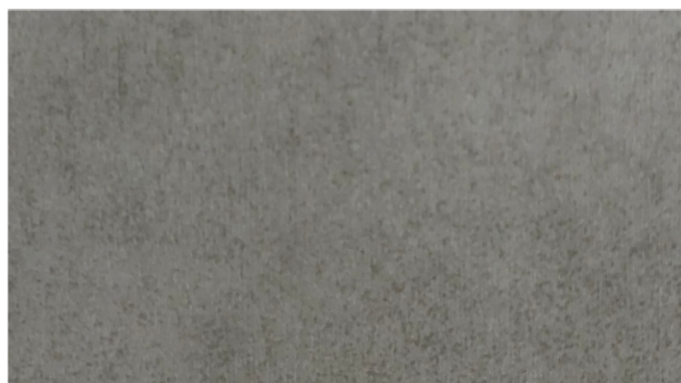
MT-25311

**HETEROGENEOUS VINYL FLOOR**  
**PISO VINÍLICO HETEROGÉNEO**

Size : 2.0mm(T) X 2.0m(W) X 20m(L)



MT-9822



MT-9811



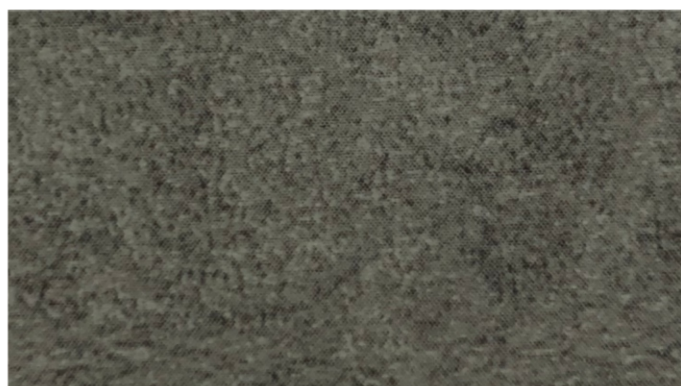
MT-9807



MT-9809



MT-9802



MT-9804



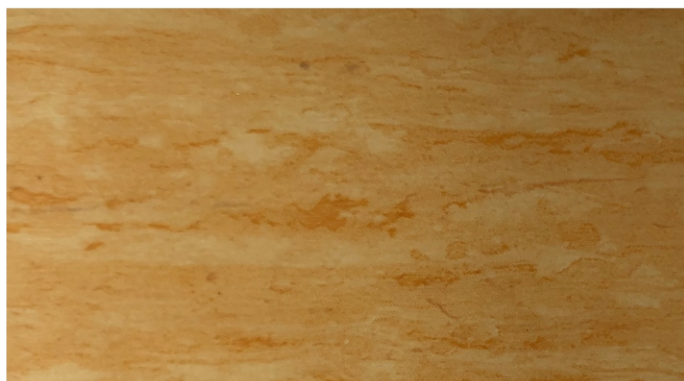
MT-9824



MT-9823

HETEROGENEOUS VINYL FLOOR  
PISO VINÍLICO HETEROGÉNEO

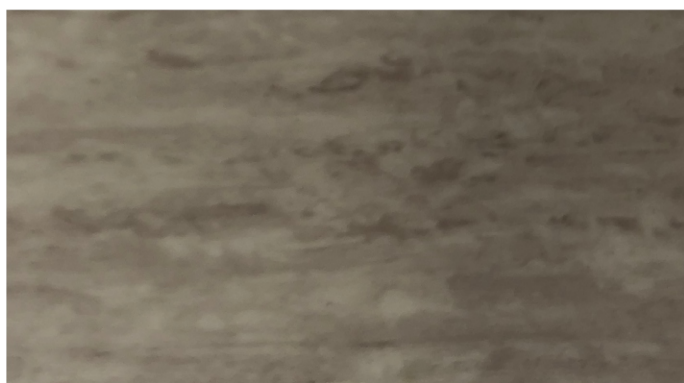
Size : 2.0mm(T) X 2.0m(W) X 20m(L)



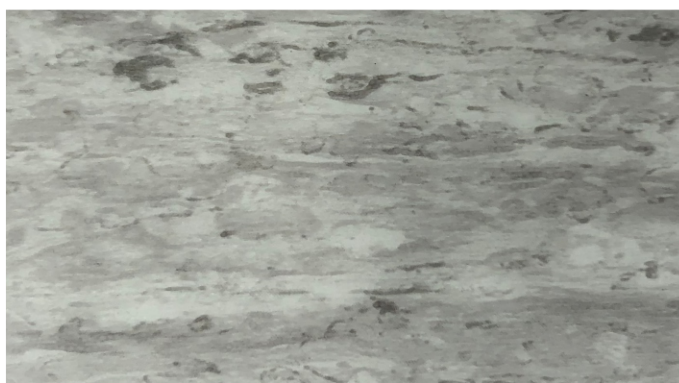
MT-2509



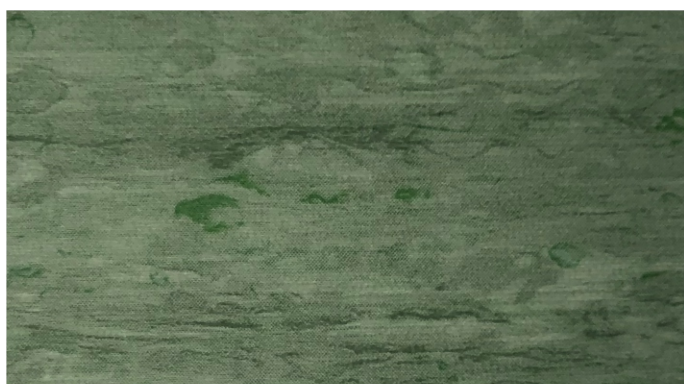
MT-2502



MT-2512



MT-2501



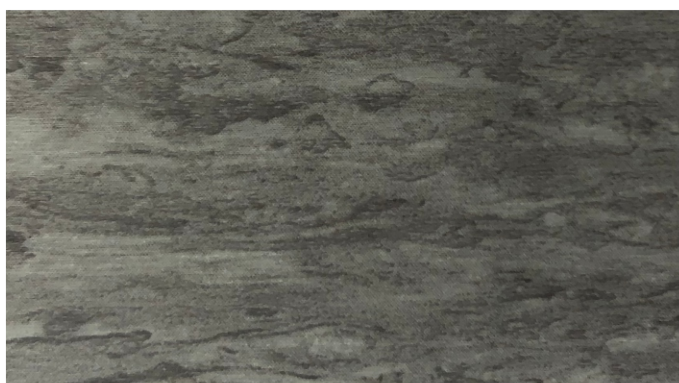
MT-2504



MT-2506



MT-2507



MT-2516

HETEROGENEOUS VINYL FLOOR  
PISO VINÍLICO HETEROGÉNEO

Size : 2.0mm(T) X 2.0m(W) X 20m(L)



MT-8001



MT-8002



MT-8003







MT-8004



MT-8005



| Characteristics  | Standard          | Unit   | Result                       |
|--|-------------------|--|------------------------------|
| Type of flooring   | ISO 10581-EN 649  |  | Heterogeneous vinyl flooring |
| Material   |                   |  | Polyvinyl chloride           |
| Cover  |                   |  | UV                           |
| Safety criteria  |                   |  |                              |
| Flammability   | GB 8624-2012      | class  | B1                           |
| Slip resistance  | DIN 51130         | group  | R9                           |
| Dynamic coefficient of friction  | EN 13893          | class  | DS                           |
| Performance behaviour  |                   |  |                              |
| Sheet width  | ISO 24341-EN 426  | m  | 2                            |
| Sheet length   | ISO 24341-EN 426  | m  | 20                           |
| Overall thickness  | ISO 24346-EN 428  | mm   | 2.0                          |
| Total weight   | ISO 23997-EN 430  | kg/m <sup>2</sup>  | 3.2                          |
| Wear layer thickness   | ISO 24346-EN 428  | mm   | 0.35                         |
| Dimensional stability  | ISO 23999-EN 434  | -  | X : ≤0.4%<br>Y : ≤0.4%       |
| Color fastness   | ISO 105-B02       | rating   | ≥6                           |
| Resistance to staining   | EN 423            |  | No Stain 0                   |
| Bend resistance  | GB/T 11982 2-2015 |  | no cracking                  |
| Antibacterial  | ISO 22196         |  | first class                  |
| Anti iodine  |                   |  | good                         |
| Classification   |                   |  |                              |
| Domestic   | ISO 10874-EN 685  | class  | heavy duty                   |
| Commercial   | ISO 10874-EN 685  | class  | more heavy duty              |
| Industrial   | ISO 10874-EN 685  | class  | most heavy duty              |
| Additional property  |                   |  |                              |
| Castor chair  ✓       |                   | Antistatic Behaviour  ✓ |                              |
| Underfloor Heating  ✓ |                   | Chemical Resistance  ✓  |                              |



ECOLOGY



FIRE-RETARDED



WEAR-RESISTING



NON-SKID



RESILIENCE



MOSITURE-STABLE



COMFORTABLE



EASY CLEANING

**INOFLOOR EEUU**

304 INDIAN TRACE  
WESTON, FL 33326  
STE 626

**INOFLOOR EEUU**

30 N GOULD ST  
SHERIDAN, WY 82801  
STE 2299