



NEOCONSTRU



PRODUCT DESCRIPTION

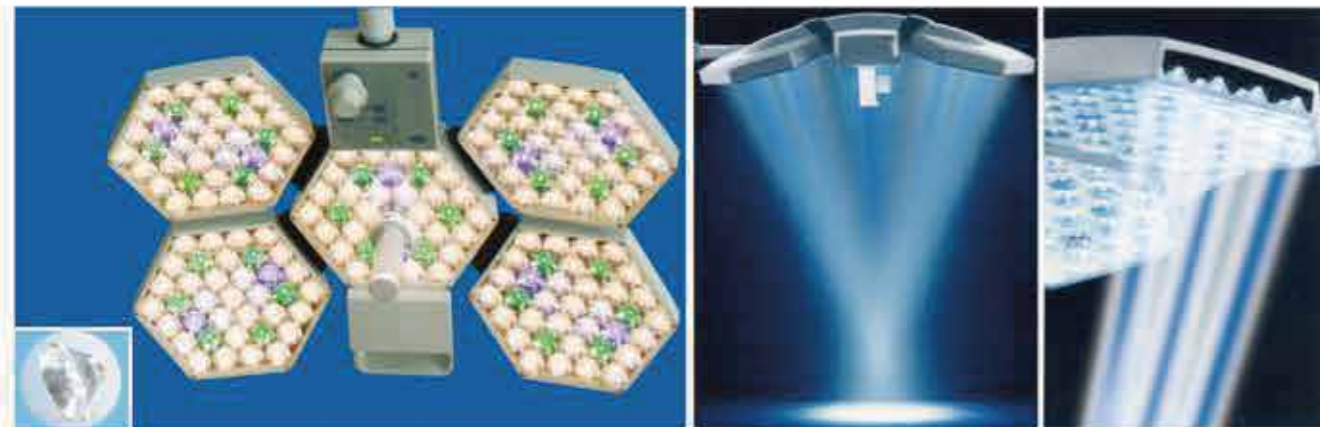
**LED SERIES
SHADOWLESS OPERATING LAMP**

- **Precise**
Uniform, homogeneous lighting in surface and deep cavity procedures thanks to innovative shadow control.
- **Simple**
Our ergonomic, sterile operating concept allows for the simple and flexible control of all functions by the surgical team.
- **Durable**
Almost unlimited LED life expectancy delivers tremendous product reliability and investment protection.
- **Efficient**
Environmentally proactive: low power consumption and durable LEDs minimize the impact on our precious resources.



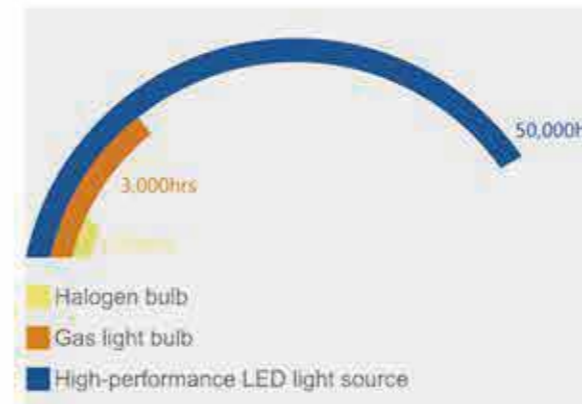
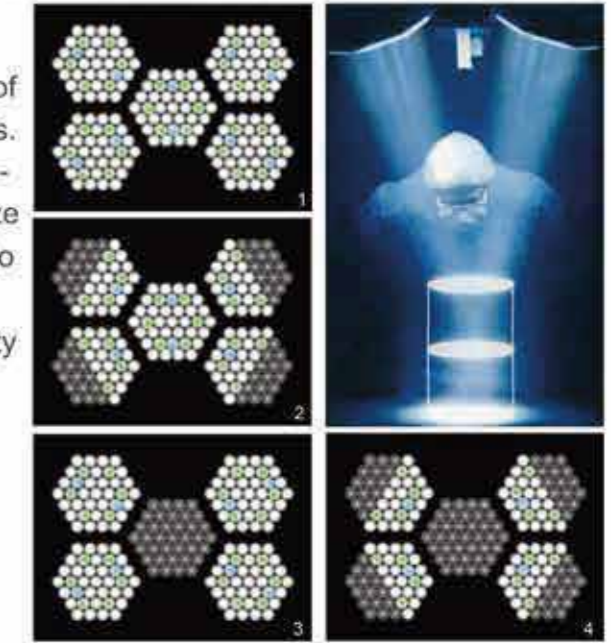
LEADING-EDGE LIGHTING TECHNOLOGY

Thanks to their great performance and outstanding energy efficiency, the use of LEDs to illuminate demanding environments is becoming ever more common. Compared to conventional lamps, light emitting diodes have a whole range of technological, economic and ecological advantages: low heat generation, minimal power consumption and an almost unlimited life expectancy. Combines these characteristics. The result: unparalleled performance.



UNMATCHED SHADOW MANAGEMENT OPTIMIZES CONCENTRATION AND SURGICAL TEAM EFFICIENCY

Bestran has harnessed the far-reaching potential of the multi-lens matrix to virtually eliminate shadows. Overlapping fields of light and multiple patterns - selectable based on the surgical situation - minimize shadows and redirect the full selected intensity to the surgical site. The result is up to 20% more light in deep cavity situations.



Long life lighting

LED light source life of up to 50,000 hours or more, with an average life of an ordinary light shadowless lamp halogen 50 times, and each LED can be individually replaced, to ensure maximum use of economy.

OPTIMIZED AIR FLOW DESIGN FOR BETTER HYGIENE



With its open design and superior ventilated ceiling tolerance, Ensures that perfect operating conditions are created and hygienic requirements are fulfilled. The airflow surface under the ventilated ceiling is minimized and the reduced heat generation ensures a low turbulence displacement stream under the light head.

Perfect Cold Light Effect

LED light source does not produce infrared, the temperature rise above surgeon's head is less than 2°C, meanwhile very low temperature rise above the operation field avoids the patients' fluid loss. Thus solve the problem of unsatisfactory wound healing because of higher temperature rise produced by ordinary operating lamp









BT-LED3+5-TV Color temperature

Camera system technical parameters
(color temperature)

Model	Pixel	Signal-to-noise ratio	Camera distance	Focal length	Multiple	Video output	Camera power	Minimum installation high
BT-LED3+5 (Center camera)	2.38 million	≥45db	0.5-2m	F5.1mm-51.0mm	10Times/ double	1.0Vp-p75Ω	12VDC±10%	3100mm



1. The all-digital signal output ensures lossless signal transmission, and can be directly stored on the U disk with the captured still image.
2. The zoom of the camera can be controlled in various ways through the control box and PC.
3. Adopt high-sensitivity zoom integrated digital video camera.

-  Monitoring function: 4 screen split real-time display
-  Recording function: real-time recording of each screen
-  Playback function: select the playback button for image playback
-  Network function: provide LAN and remote network transmission interface





BT-LED5+5



BT-LED3+5



BT-LED3+3



BT-LED5



BT-LED3

Model	Illuminance	Color temperature	Colour reduction Index	Total irradiance	Illuminance Depth	Size of light filed	Lamp head Diameter	Rated Power of bulb	Best Height of Installation	ENDO
BT-LED5+5	≥160,000Lux ≥160,000Lux	3500±200K 4000±200K 4500±200K 5000±200K	96Ra	130W/m ² 130W/m ²	1170mm 1170mm	220-310mm	860mm 860mm	3.2V 1W	2900mm	Yes
BT-LED3+5	≥160,000Lux ≥140,000Lux	3500±200K 4000±200K 4500±200K 5000±200K	96Ra	130W/m ² 130W/m ²	1170mm 1045	220-310mm	860mm 700mm	3.2V 1W	2900mm	Yes
BT-LED3+3	≥140,000Lux ≥140,000Lux	3500±200K 4000±200K 4500±200K 5000±200K	96Ra	130W/m ² 130W/m ²	1045mm 1045mm	220-310mm	700mm 700mm	3.2V 1W	2900mm	Yes
BT-LED5	≥160,000Lux	3500±200K 4000±200K 4500±200K 5000±200K	96Ra	130W/m ²	1170mm	220-310mm	860mm	3.2V 1W	2900mm	Yes
BT-LED3	≥140,000Lux	3500±200K 4000±200K 4500±200K 5000±200K	96Ra	130W/m ²	1045mm	220-310mm	700mm	3.2V 1W	2900mm	Yes

PRODUCT INSTRUCTION

PRECISE DIMMING CONTROL FOR VARIOUS LIGHTING REQUEST

With 16-stage illuminance adjustment, 4-stage color temperature adjustment, 16-stage spot size adjustment by electrical control, endo mode, R9 mode, green light (GL) mode



*Only BT-LED4D with GL mode



UNIQUE MAINTENANCE ROOM FOR QUICK AND EASY MAINTENANCE

The innovative design of photoelectric separation keeps the circuit board away from heat sources. It increases the service life time, also improves the simplicity, economy and timeliness of the maintenance. What's more, the control box can also be easily opened and maintained.



WITH REMOVABLE, STERILIZABLE HANDLE

The removable, sterilizable center handle makes it easy for doctors and nurses to control the direction and depth of the light



ALUMINUM ALLOY PRECISION CASTING MODULAR DESIGN WITH FLEXIBLE COMBINATION AND DURABILITY

The modular lamp body is made of high-quality aluminum alloy, and the peripheral auxiliary handle can help the user with accurately position.



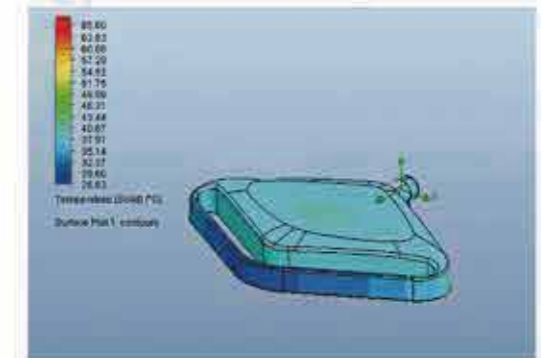
SUPERIOR LAMINAR FLOW DESIGN

The streamlined lamp body design and careful assembly can increase the flow efficiency of the airflow and remove the dust and bacteria around the lamp body.



ORIGINAL THERMAL MANAGEMENT SYSTEM TO EFFECTIVELY REDUCE THE TEMPERATURE OF CHIP CORE

The cast high-heat-conducting aluminum alloy radiator increases the internal heat-dissipation area, which can instantly derive heat, and with high-efficiency LED bulbs, allow to effectively reduce the temperature of the lamp and improve the service life of the lamp.



HIGH-DENSITY LIGHT MIXING SYSTEM MAKES FOR PRECISE, HANDY DIMMING

Using Bestran's special high-density light mixing technology, it provides high brightness with great quality, and it's with 16-stage illuminance adjustment from 40000lux to 160000lux and 4-stage color temperature adjustment from 3500K to 5000K.



External HD camera

The suspension of our system for monitors and cameras can help users provide the video information they need in and outside the surgical field in clear and accurate high-definition form without being affected. No signal conversion is required, and the video quality will not be reduced.



HD camera module parameters 2K (standard)

Image device: 1 / 2.8 type Exmor CMOS sensor
Effective pixels: about 3.27 million
Optical zoom: 20x (240x digital zoom)
Signal system: HD: (1080p / 29.97, 1080p / 25, 1080i / 59.94, 1080i / 50, 720p / 50, 720p / 29.97, 720p / 25)
Image size (H * V): 1920 * 1080, 1280 * 720, 720 * 480, 720 * 576
Signal output: Y / Pb / Pr

HD camera module parameters 4K (optional)

Image device: 1/2.3 inch Exmor R CMOS
Effective pixels: about 8.93 million pixels
Optical zoom: 20 times
Lens: 3.9 mm (f = wide) ~ 46.8 mm (tele), F 1.8 ~ F 2.0
Signal system: 4K 2160P/29.97, 2160P/25 FHD/HD 1080P/59.94, 1080P/50, 1080i/59.94, 1080i/50, 720P/59.94, 720P/50
Lowest illuminance High sensitivity mode Color: 0.75 lx(F1.8,AGC on,1/30 s)
Normal mode Color: 3 lx(F1.8,AGC on,1/30 s)
Shutter speed: 1/1 second to 1/10,000 second, 22 steps
Focus system: automatic (sensitivity: normal, low), one-button auto focus, manual, interval auto focus, zoom trigger auto focus, focus compensation when ICR mode is turned on



One-key low light (endoscope): 3000lux

The operating light is equipped with a one-key low light (endoscope) lighting mode, which allows the surgeon to quickly switch from the conventional lighting mode. Providing soft lighting for the environment will not interfere with the doctor's field of vision and tissue observation during the process of endoscopy.

Heavy-duty HD flat panel display suspension

The flat-panel display arm can support up to 24 kg (52.9 lb) dual/dual displays, which is very suitable for large-screen displays under 32 inches. The large display compatibility allows the surgical team to see more of the operating area. Optional medical-grade display can also add uncompressed 1080p high-definition video, which can display SD and HD endoscopes, ultrasound, C-arm and others. The real image of the device.



All-round wireless remote control

- Function:
- *Open and close
 - *Spot size
 - *Illumination adjustment
 - *Color temperature
 - *One-key laser (endoscope)
 - *Red light compensation
 - *Green light mode





BT-LED4+4D



BT-LED3+4D



BT-LED3+3D



BT-LED4D



BT-LED3D

Model	Illuminance	Color temperature	Colour reduction Index	Total irradiance	Size of light field	Power supply voltage	Best Height of Installation	Total Power Consumption	Total LED Bulb QTY	Green ENDO	Dimming Type
BT-LED4+4D	≥160,000Lux ≥160,000Lux	3500±300K 4000±300K 4500±300K 5000±300K	Ra:96 R9:97 R13:98	380W/m ² 380W/m ²	120-250 mm	AC110-240V 50/60Hz	2900mm	100W	224pcs	Yes	Analog Dimming
BT-LED3+4D	≥160,000Lux ≥140,000Lux	3500±300K 4000±300K 4500±300K 5000±300K	Ra:96 R9:97 R13:98	380W/m ² 380W/m ²	120-250 mm	AC110-240V 50/60Hz	2900mm	90W	187pcs	Yes	Analog Dimming
BT-LED3+3D	≥140,000Lux ≥140,000Lux	3500±300K 4000±300K 4500±300K 5000±300K	Ra:96 R9:97 R13:98	380W/m ² 380W/m ²	120-250 mm	AC110-240V 50/60Hz	2900mm	80W	150pcs	No	Analog Dimming
BT-LED4D	≥160,000Lux	3500±300K 4000±300K 4500±300K 5000±300K	Ra:96 R9:97 R13:98	380W/m ²	120-250 mm	AC110-240V 50/60Hz	2900mm	50W	112pcs	Yes	Analog Dimming
BT-LED3D	≥140,000Lux	3500±300K 4000±300K 4500±300K 5000±300K	Ra:96 R9:97 R13:98	380W/m ²	120-250 mm	AC110-240V 50/60Hz	2900mm	40W	75pcs	No	Analog Dimming



BT-LED4DW



BT-LED3DS



BT-LED3+4D-TV



BT-LED3DW



BT-LED3DE

Model	Illuminance	Color temperature	Colour reduction Index	Total irradiance	Size of light field	Best Height of Installation	Total Power Consumption	Total LED Bulb QTY	Green ENDO	Dimming Type
BT-LED3DS	≥140,000Lux	3500±300K 4000±300K 4500±300K 5000±300K	Ra:96 R9:97 R13:98	380W/m ²	120-250 mm	2900mm	40W	75pcs	No	Analog Dimming
BT-LED3DE	≥140,000Lux	3500±300K 4000±300K 4500±300K 5000±300K	Ra:96 R9:97 R13:98	380W/m ²	120-250 mm	2900mm	40W	75pcs	No	Analog Dimming
BT-LED4DW	≥160,000Lux	3500±300K 4000±300K 4500±300K 5000±300K	Ra:96 R9:97 R13:98	380W/m ²	120-250 mm	2900mm	50W	112pcs	Yes	Analog Dimming
BT-LED3DW	≥140,000Lux	3500±300K 4000±300K 4500±300K 5000±300K	Ra:96 R9:97 R13:98	380W/m ²	120-250 mm	2900mm	40W	75pcs	No	Analog Dimming

PRODUCT INSTRUCTION

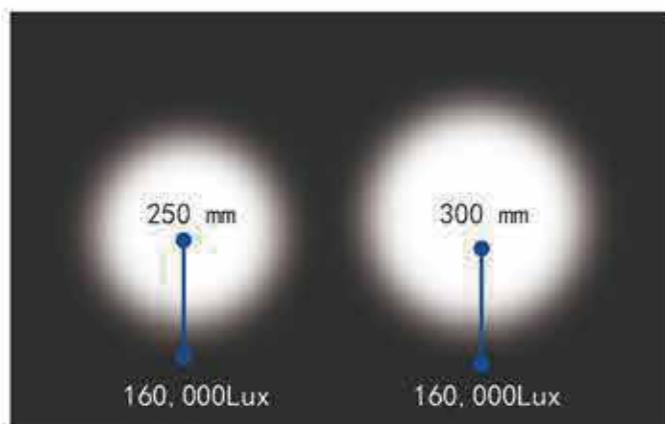
**LED SERIES
SHADOWLESS OPERATING LAMP**

- Precise**
Uniform, homogeneous lighting in surface and deep cavity procedures thanks to 700 500LED's innovative shadow control.
- Simple**
Our ergonomic, sterile operating concept allows for the simple and flexible control of all functions by the surgical team.
- Durable**
Almost unlimited LED life expectancy delivers tremendous product reliability and investment protection.
- Efficient**
Environmentally proactive: low power consumption and durable LEDs minimize the impact on our precious resources.



Excellent Lighting Effect

Shadowless lamp is composed of six light bulbs. The unique highperformance lens ensures that the best operating area lighting up to 160,000 lux can be achieved within the adjustable range of the spot. The maximum illuminance can be achieved within the spot adjustment range, which not only meets the requirement for large spot high illumination in open major surgery such as cardiothoracic surgery, but also meets the small spot high illumination requirements required for routine minor operations such as urology and gynecology. The single surgical lamp contains up to 108 LED light sources, achieving super-strong, uniform illumination at 1400mm depth.



Color Temperature Technology

Guaranteed Color Rendering Index by Reliable Beam Synthesis Control Technology. In the case of 97, the color temperature is adjustable between 3800K-5000K. The surgeon can adjust according to his or her habits or different surgical sites. Color temperature to achieve the desired tissue contrast for optimal grouping. Weave resolution. In addition, when doctors perform long or night surgery. Can cause visual fatigue, increase color temperature gradually to increase attention force.



Endoscope Mode

The surgical light is equipped with a one-button endoscope illumination mode that allows the surgeon to quickly switch from the general lighting mode. Provides soft lighting for dark environments and does not interfere with the doctor's field of vision and observation of tissue during endoscopic surgery.



Ideal Conformity To purification Requirements

The operating room must strictly comply with air purification standards. The unique aerodynamic shape of the shadowless lamp greatly reduces the area of the lamp cap that blocks the flow of purified air. This minimizes the air flow under the lamp that affects the purifying effect and therefore has the best laminar flow.





BT-LED700700B



BT-LED700500B



BT-LED500500B



BT-LED700B



BT-LED500B

Model	Illuminance	Color temperature	Colour reduction Index	Total irradiance	Size of light field	Best Height of Installation	Total Power Consumption	Total LED Bulb QTY	ENDO
BT-LED700700B	≥160,000Lux ≥160,000Lux	3800±500K 4400±500K 5000±500K	93Ra 93Ra	544W/m ² 544W/m ²	250-300mm	2900mm	80W 80W	216pcs (18*6+18*6)	Yes
BT-LED700500B	≥160,000Lux ≥140,000Lux	3800±500K 4400±500K 5000±500K	93Ra 93Ra	544W/m ² 534W/m ²	250-300mm	2900mm	80W 60W	180pcs (18*6+12*6)	Yes
BT-LED500500B	≥140,000Lux ≥140,000Lux	3800±500K 4400±500K 5000±500K	93Ra 93Ra	534W/m ² 534W/m ²	250-300mm	2900mm	60W 60W	144pcs (12*6+12*6)	Yes
BT-LED700B	≥160,000Lux	3800±500K 4400±500K 5000±500K	93Ra	544W/m ²	250-300mm	2900mm	80W	108pcs (18*6)	Yes
BT-LED500B	≥140,000Lux	3800±500K 4400±500K 5000±500K	93Ra	534W/m ²	250-300mm	2900mm	60W	72pcs (12*6)	Yes



BT-LED700BS



BT-LED700BE



BT-LED700BS



BT-LED700BE



BT-LED700500B-TV

Model	Illuminance	Color temperature	Colour reduction Index	Total irradiance	Size of light field	Emergency Time	Total Power Consumption	Total LED Bulb QTY	ENDO
BT-LED700BS	≥160,000Lux	3800±500K 4400±500K 5000±500K	93Ra	544W/m ²	250-300mm	/	80W	108pcs (18*6)	Yes
BT-LED700BE	≥160,000Lux	3800±500K 4400±500K 5000±500K	93Ra	544W/m ²	250-300mm	6hrs	80W	180pcs (18*6)	Yes
BT-LED500BS	≥140,000Lux	3800±500K 4400±500K 5000±500K	93Ra 93Ra	534W/m ²	250-300mm	/	60W	72pcs (12*6)	Yes
BT-LED500BE	≥140,000Lux	3800±500K 4400±500K 5000±500K	93Ra	534W/m ²	250-300mm	6hrs	60W	72pcs (12*6)	Yes

Product introduction

Uniform, homogeneous lighting in surface and deep cavity procedures thanks to innovative shadow control.

Our ergonomic, sterile operating concept allows for the simple and flexible control of all functions by the surgical team.

Almost unlimited LED life expectancy delivers tremendous product reliability and investment protection.

Environmentally proactive: low power consumption and durable LEDs minimize the impact on our precious resources.



BT-LED260
Shadowless Operating Lamp



Unique crystal lens design for best color uniformity of the light

Excellent multi-lens system

With its LED technology, the minor surgical Light offers not only higher light intensity, but also more superior light quality when compared to conventional halogen lights. Light is optimally distributed by the unique Beatran multi-lens matrix, which provides homogenous light quality in both area and depth, for the best-possible visualization during examinations and minor procedures.



Lighting designed to meet your individual needs

Perfect gentle lighting is also a matter of settings. Eight brightness levels from 40,000 to 80,000 lux as well as two different color temperature levels (3,800 K / 4,800 K) allow you to adjust the light optimally to any treatment situation via the control panel. The quality of color reproduction remains constant and excellent illumination ensured every time.



Safe hygiene for your treatment

With the removable and sterilisable handle, it is suitable for hygienically critical applications. Cleaning can be done easily and safely thanks to its smooth surfaces. The light can be positioned exactly to the wound field with the handle. Everything you could want in comfort and flexibility.

Handle material: PC (Steam sterilization at 120 °C, 1,3 bar 15 minutes)



PRODUCT MODEL



Shadowless Operating Lamp

Type	Illuminance	Colour temperature	Colour reduction index(Ra)	Illuminacne depth	Total irradiance	Size of light field	Lamp head diameter	Rater power of bulb	Service life of illuminacne	Power supply voltage	Total power consumption	Total LED bulb quantity	Emergency time
BT-LED 260S	≥80,000Lux	3800±300K 4800±300K	97	≥1600mm	200W #f	195mm	450mm	3.2V/1W	≥50,000h	AC110-240V, 50/60Hz	60VA	25pcs	/
BT-LED 260C	≥80,000Lux	3800±300K 4800±300K	97	≥1600mm	200W #f	195mm	450mm	3.2V/1W	≥50,000h	AC110-240V, 50/60Hz	60VA	25pcs	/
BT-LED 260E	≥80,000Lux	3800±300K 4800±300K	97	≥1600mm	200W #f	195mm	450mm	3.2V/1W	≥50,000h	AC110-240V, 50/60Hz	60VA	25pcs	/
BT-LED 260W	≥80,000Lux	3800±300K 4800±300K	97	≥1600mm	200W #f	195mm	450mm	3.2V/1W	≥50,000h	AC110-240V, 50/60Hz	60VA	25pcs	≥6hours



General Mode



ENDO Mode

One-button dim light

The shadowless operating lamp is configured with one-button dim light (as Endoscope Mode), which is convenient for the surgeon to switch quickly from the general mode. It does not interfere with the doctor's field of vision and observation of the tissue during.



With removable, sterilizable handle

The removable handle can be sterilized at high temperature, which is convenient for doctors and nurses to control the direction and depth of light.



Precise dimming control for various lighting request

Using original high-density light mixing technology, it provides high brightness and high light quality at the same time, and its illuminance $\geq 110,000$ lux with 8 levels of brightness adjustment, 3 levels of color temperature adjustment as 3800K-5000K \pm 300, and electronic spot size adjustment of 130 -160mm, also it's with ENDO Mode.



Original thermal management system to effectively reduce the temperature of chip core

The cast high-heat-conducting aluminum alloy radiator increases the internal heat-dissipation area, which can instantly derive heat, and with high-efficiency LED bulbs, allow to effectively reduce the temperature of the lamp and improve the service life of the lamp.

Superior laminar flow design

The streamlined lamp body design and careful assembly can increase the flow efficiency of the airflow and remove the dust and bacteria around the lamp body.





BT-LED270



BT-LED270C



BT-LED270S



BT-LED270W

Model	Illuminance	Color temperature	Colour reduction Index	Illuminance Depth	Spot size	Dimension	Installation height	Remote control	Input power	Total LED Bulb QTY	ENDO
BT-LED270	≥110,000Lux ≥110,000Lux	3800±300K 4400±300K 5000±300K	Ra:95 R9:90	1300mm	Φ320	110-190mm	2800-2900 mm	Yes	180VA	37pcs 37pcs	9000lux
BT-LED270W	≥110,000Lux	3800±300K 4400±300K 5000±300K	Ra:95 R9:90	1300mm	Φ320	110-190mm	2400-2900 mm	Yes	90VA	37pcs	9000lux
BT-LED270C	≥110,000Lux	3800±300K 4400±300K 5000±300K	Ra:95 R9:90	1300mm	Φ320	110-190mm	2400-2900 mm	Yes	90VA	37pcs	9000lux
BT-LED270S	≥110,000Lux	3800±300K 4400±300K 5000±300K	Ra:95 R9:90	1300mm	Φ320	110-190mm	/	Yes	90VA	37pcs	9000lux



BT-LED25



BT-LED25W



BT-LED255

Feature:

- Excellent cold light:adopting LED as light source,without temperature rising.
- Excellent daylight quality and CRI meet the illumination needs of the doctors.
- Excellent lighting effect:unique optical system,homogeneous light spot, high-definition.
- Long service life:LED life is up to 50,000 hours.
- Energy saving and environment-friendly.
- Flexible and stable balance arm suspension system contents various requirement on height and angle.

Model	Illuminance	Color temperature	Colour reduction Index	illuminance depth	Total irradiance	Size of light field	Lamp head diameter	Rated power of bulb	Best Height of Installation
BT-LED255 Ceiling	≥100,000Lux ≥100,000Lux	4800±300K	92Ra 92Ra	≥500mm ≥500mm	480W/m ² 480W/m ²	160-220mm	500mm	3.2V/1W	2600mm
BT-LED25 Ceiling	≥100,000Lux	4800±300K	92Ra	≥500mm	480W/m ²	160-220mm	500mm	3.2V/1W	2300mm
BT-LED25W On Wall	≥100,000Lux	4800±300K	92Ra	≥500mm	480W/m ²	160-220mm	500mm	3.2V/1W	2300mm



BT-LED14S



BT-LED14E



BT-LED15S



BT-LED15E

Model	Illuminance	Color temperature	Colour reduction Index	Illuminance Depth	Total irradiance	Size of light field	Lamp head diameter	Rated power of bulb	Emergency Time
BT-LED14S	≥80,000Lux	4800±300K	92Ra	≥500mm	480W/m ²	160-220mm	500mm	3.2V/1W	/
BT-LED14E	≥80,000Lux	4800±300K	92Ra	≥500mm	480W/m ²	160-220mm	500mm	3.2V/1W	≥6hrs

Model	Illuminance	Color temperature	Colour reduction Index	Illuminance Depth	Total irradiance	Size of light field	Lamp head diameter	Rated power of bulb	Emergency Time
BT-LED15S	≥100,000Lux	4800±300K	92Ra	≥500mm	480W/m ²	160-220mm	500mm	3.2V/1W	/
BT-LED15E	≥100,000Lux	4800±300K	92Ra	≥500mm	480W/m ²	160-220mm	500mm	3.2V/1W	≥6hrs



BT-LED280C



BT-LED280W



BT-LED280S

Illumination at 1m(lux): ≥ 30000 Lux
 Color Rendering index(Ra):85%
 color temperature(K): 4500 ± 500 K
 Color rendering index(Ra):93
 Tilt right and left: 180°
 Tilt front and back: 180°
 Average bulb life(hours):40000
 Input Power: 20VA



BT-LED609

BT-LED610
(AC/DC)

Model	Illuminance	Color temperature	Colour reduction Index	Total irradiance	Size of light field	Total Power Consumption	Total LED Bulb QTY	Emergency Time
BT-LED280C	$\geq 50,000$ Lux	4000 ± 500 K	97Ra	$171W/m^2$	150mm	20W	19pcs	/
BT-LED280W	$\geq 50,000$ Lux	4000 ± 500 K	97Ra	$171W/m^2$	150mm	20W	19pcs	/
BT-LED280S	$\geq 50,000$ Lux	4000 ± 500 K	97Ra	$171W/m^2$	150mm	20W	19pcs	/
BT-LED280E	$\geq 50,000$ Lux	4000 ± 500 K	97Ra	$171W/m^2$	150mm	20W	19pcs	2hrs



BT-LED205

Feature:

- Adopt imported LED cold light source, white the ultra-thin optical lens
- Adopt digital means for stepless regulation of LED brightness.
- Adjust the diameter of light spot and color temperature
- Removable handle sheath, easy to clean and disinfect
- Flower-shaped super thin design light head
- With Endoscopy model
- Titanium alloy balance arm, no welding, never rust
- Nano coating of heat sink has created an excellent heat dissipation effect

Specification:

Illumination at 1m: 160000/160000lux
 Diameter of light head: 72/72cm
 Light field diameter at 1m: 10-28 cm
 Depth of illumination: 150 cm
 Color temperature: (3500-4500)±500K
 Number of LED bulbs: 45/45
 Heat to light ratio: <6
 working distance: 70-140 cm
 Max Power Consumption (VA): 90
 Input Power: 180VA



BT-LED206



BT-LED600

Feature:

- Adopt imported LED cold light source
- Nano coating of heat sink has created an excellent heat dissipation effect.
- Intelligent touch screen
- Removable handle cover, facilitate cleaning and sanitation
- Titanium alloy balance arm, no welding, never rust
- Imported spring arm, lift up and down, light and flexible
- Adjustable color temperature, with R9(red) and R11(green) auxiliary lighting function
- With endoscopy surgery auxiliary lighting function
- Light focus size adjusted electrically

Specification:

Illumination at 1m: 160000/160000lux
 Diameter of light head: 71/71cm
 Light field diameter at 1m: 10-28 cm
 Depth of illumination: 150 cm
 Color temperature: (3500-5500)±500K
 Number of LED bulbs: 84/84
 Heat to light ratio: <6
 working distance: 70-140 cm
 Input Power: 180VA

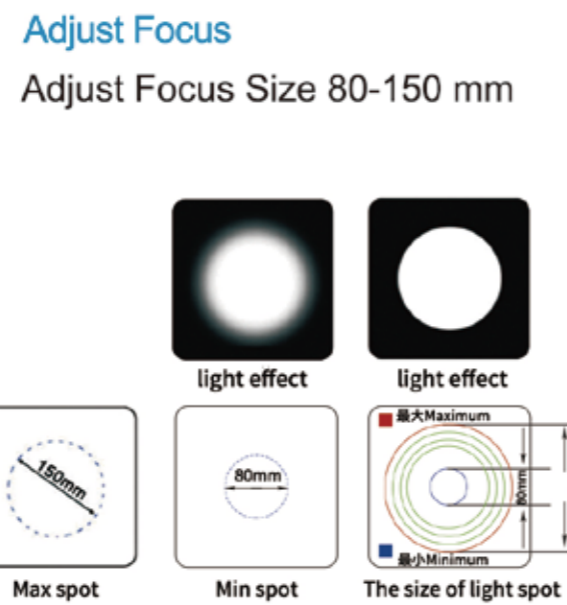


BT-LED601

Led examination lamp



BT-LED01F



Model	Illuminance	Color temperature	Adjust	Related Power of Bulb	Size of light field	Bulb	Power supply voltage	Crutch
BT-LED01F	40,000Lux/0.5m 26,000Lux/1m	6000±500K	Adjust light	12V/700mA	80-150mm at 1m	LED	AC110-240V 50/60Hz	Adjust up/down



BT-LED1SA



BT-LED01A



BT-LED01W

Model	Illuminance	Color temperature	Brightness Adjust	Related Power of Bulb	Size of light field	Lamp head Diameter	Bulb life	Power supply voltage	Pole
BT-LED1SA	50,000Lux/0.5m	4800±200K	Adjust light	3.2V/1W	120mm	160mm	50000hrs	AC110-240V 50/60Hz	Adjust up/down
BT-LED01A	30,000Lux/0.5m 10,000Lux/1m	4800±200K	Absolute Adjust	3.3V/3W	100mm	55mm	50000hrs	AC110-240V 50/60Hz	Adjust up/down
BT-LED01W	30,000Lux/0.5m 10,000Lux/1m	4800±200K	Absolute Adjust	3.3V/3W	100mm	55mm	50000hrs	AC110-240V 50/60Hz	/

Electric Operating Table: BT-RA56



Antu-Trendelenburg



Left Lateral Tilt



Height Adjustment



Trendelenburg



Right Lateral Tilt



Backrest Down

Features:

- This table is suitable for general and orthopaedic operation.
- It has longitudinal moving 300mm function, very convenient for X-ray examination and C-arm photograph on different parts of body.
- It adopts famous brand motors, smooth and silent operation.
- The height adjustment, back section, trendelenburg, lateral adjustment, moving 300mm are all controlled by motors.
- The head is manual adjustment and leg section are air spring adjustment.
- Made of full premium 304 stainless steel.
- Double controller system, one is hand remote controller, the other is on column.
- It also has one key 0 position function.

Technical Parameter:

Dimensions: 2050*500mm

Functions:

Height Adjustment(electric): 700-1000mm

Trendelenburg(electric): $\pm 30^\circ$

Lateral Tilt(electric): $\pm 20^\circ$

Back Section (electric): $+70^\circ/-30^\circ$

Head Board (manual): $+45^\circ/-90^\circ$

Leg Board (manual): $+15^\circ/-90^\circ$

Table Top Longitudinal Moving(electric): 300mm

Build-in Kidney Elevator(manual): 0-120mm

Standard Accessories:

Shoulder supports: 2pcs

Waist supports: 2pcs

Arm supports: 2pcs

Leg supports: 2pcs

Anesthetic screen frame: 1pc

Mattress: 1pc

Hand controller: 1pc

Controller on the column: 1pc

Power line: 1pc

Electric Operating Table BT-RA53



Features:

- This table is suitable for general and orthopaedics operation.
- It has longitudinal moving 300mm function, very convenient for X-ray examination and C-arm photograph on different parts of body.
- It adopts famous brand motors, smooth and silent operation.
- The height adjustment, back section, trendelenburg, lateral adjustment, moving 300mm are all controlled by motors.
- The head is manual adjustment and leg section are air spring adjustment.
- Made of full premium 304 stainless steel.
- Double controller system, one is hand remote controller, the other is on column.
- It also has one key 0 position function.

Specification:

Dimensions: 2050*500mm
 Height Adjustment(electric): 700-1000mm
 Trendelenburg(electric): $\pm 30^\circ$
 Lateral Tilt(electric): $\pm 20^\circ$
 Back Section (electric): $+70^\circ/-30^\circ$
 Head Board (manual): $+45^\circ/-90^\circ$
 Leg Board (manual): $+15^\circ/-90^\circ$
 Table Top Longitudinal Moving(electric): 300mm
 Build-in Kidney Elevator(manual): 0-120mm

Standard Accessories:

Shoulder supports: 2pcs
 Waist supports: 2pcs
 Arm supports: 2pcs
 Leg supports: 2pcs
 Anesthetic screen frame: 1pc
 Mattress: 1pc
 Hand controller: 1pc
 Controller on the column: 1pc
 Power line: 1pc

DSA,ERCP Electric table BT-RA62



Features:

- This table is suitable for ERCP,DSA operation,
- It adopts famous brand motors, smooth and silent operation.
- The height adjustment, longitudinal moving, left/right moving are all controlled by motors.
- The tabletop use 40mm carbon fiber material that can have high definition fluoroscopy imaging effect.
- 125mm castors is easy to moving.

Specification:

Dimension: 2430*520mm
 Height Adjustment(electric): 720-920mm
 Trendelenburg(electric): $\pm 25^\circ$
 Lateral Tilt(electric): $\pm 20^\circ$
 Back Section (electric): $+75^\circ/-30^\circ$
 Leg Board (manual): $+30^\circ/-90^\circ$

Standard Accessories:

Hand controller: 1pc
 Mattress: 1set
 Castor: 1set

Electric Operating Table: BT-RA014



Features:

- longitudinal movement 350mm;
- With emergency power;
- Suitable for x-ray and c-arm;
- Motors control: height up and down, Reversed Trendelenburg & Trendelenburg, Lateral tilt, backrest up and down, longitudinal movement.

Technical Parameter:

Overall Dimension: 2050mm*550mm*710-960mm
 Trendelenburg/Reversed Trendelenburg: $\geq 30^\circ / \geq 25^\circ$
 Lateral Tilt: $\geq 20^\circ$
 Backward and Forward Movements: ≥ 350 mm
 Head Section up/down: $\geq 50^\circ - 90^\circ$
 Back Section up/down: $\geq 65^\circ - 30^\circ$
 Leg plate(up/down): $\geq 90^\circ$
 Kidney Bridge Elevated: ≥ 120 mm
 Longitudinal movement: 350mm
 Power: (AC) 220V, 50Hz / 120V, 60Hz
 Safe working load: 310kg
 Battery capacity: ≥ 2.4 AH

Standard Accessories:

Anaesthetic Screen: 1 piece
 Shoulder Rest: 1 Pair
 Arm Support: 1 pair
 Body Support: 1 pair
 Knee Crutch: 1 pair
 Mattress: 1 set
 Foot Support: 1 pair
 Hand control: 1 piece



For E.N.T



For Anorectal



For Upper body



Waist bridge

Electric Operating Table: BT-RA015



Features:

With emergency power; Suitable for x-ray and c-arm; Motors control: height up and down, Reversed Trendelenburg & Trendelenburg, Lateral tilt, backrest up and down, longitudinal movement.

Technical Parameter:

Overall Dimension: 2100mm*480mm*710-960mm:

- 1) Reversed Trendelenburg: $\geq 25^\circ$ Trendelenburg: $\geq 250^\circ$
- 2) Lateral Tilt: $\geq 20^\circ$
- 3) Backward and Forward Movements: ≥ 350 mm
- 4) Head Section up/down from the horizontal: $\geq 50^\circ - 90^\circ$
- 5) Back Section up/down from the horizontal: $\geq 45^\circ - 15^\circ$
- 6) Leg plate (up/down): $\geq 90^\circ$
- 7) Kidney Bridge Elevated ≥ 120 mm
- 8) Safe working load 310kg
- 9) Lifting speed 4 ~ 16mm/s
- 10) Device safety sort I B
- 11) Ingress Protection: IPX4
- 12) Power: (AC) 220V, 50Hz / 120V, 60Hz
- 13) Internal electric source: (DC) 24V
- 14) Battery capacity ≥ 2.4 AH



Standard Accessories:

- 1 Anaesthetic Screen
- 2 Shoulder Rest
- 2 Arm Support
- 2 Body Support
- 2 Knee Crutch
- 1 Mattress



Operating Table



BT-RA30
Electric operating table



BT-RA31
Electric operating table



BT-RA32
Electric-hydraulic operating table

Model	Power	Length/Width	Height (up/down)	Trend & Reverse Trend	Lateral Tilt (left/right)	Head Rest (up/down)	Footplate(up/down & horizontal positioning)	Back plate (up/down)	Kidney bridge	Sliding
BT-RA30	Electric	2100/550mm	710/1010mm	25°/25°	15°/15°	45°/90°	15°/90°/90°	75°/20°	110mm	350mm
BT-RA31	Electric	2070/550mm	700/1000mm	25°/25°	15°/15°	45°/90°	15°/90°/90°	75°/20°	110mm	300mm
BT-RA32	Electro-Hydraulic	1960/500mm	690/1100mm	30°/30°	20°/20°	45°/90°	15°/90°/ 90°	90°/40°	120mm	350mm

Electric Hydraulic Operating table



BT-RA37



BT-RA39
Germany System



BT-RA50

Model	Power	Length/Width	Height (up/down)	Trend & Reverse Trend	Lateral Tilt (left/right)	Head Rest (up/down)	Footplate(up/down &horizontal positioning)	Back plate (up/down)	Kidney bridge	Sliding
BT-RA37	Electro-Hydraulic	2085/550mm	520/820mm	25°/25°	15°/15°	40°/90°	15°/90°/ 90°	80°/20°	110mm	/
BT-RA39	Electro-Hydraulic	2100/550mm	550/1050mm	35°/35°	25°/25°	40°/90°	80°/90°/ 90°	80°/45°	110mm	310mm
BT-RA50	Electro-Hydraulic	1980/500mm	690/1110mm	28°/28°	18°/18°	60°/80°	15°/80°/ /90°	75°/20°	110mm	340mm

Manual-Hydraulic Operating Table:BT-RA018



Features:

Suitable for x-ray, longitudinal movement 300mm, separate leg parts, height adjustable by hydraulic pump, backrest and footrest controlled by gas spring

Specification:

Dimensions of Table: 2050*500*750-1000mm

Trendelenburg & Reversed Trendelenburg: $\geq 20^\circ \geq 25^\circ$

Max. Lateral Tilt: $\geq 18^\circ$

Head Rest up and down: $\geq 45^\circ \geq 90^\circ$

Back Section-raised from the horizontal: up $\geq 60^\circ$, down $\geq 15^\circ$

Leg Section down and open: $\geq 90^\circ \geq 90^\circ$

Backward and Forward movements: ≥ 300 mm

Kidney Bridge Elevation: ≥ 120 mm

Foot Rest-can be kept horizontally or perpendicularly to the Leg Section.

Safe working load: 135kg

Manual-Hydraulic Operating Table:BT-RA019



Features:

Suitable for x-ray, 304 stainless steel base cover and column cover, double-layer table top, separate leg parts

Specification:

Dimensions of Table: 2150*520*720-970mm

Range of Movements:

Trendelenburg & Reversed Trendelenburg: $\geq 30^\circ \geq 20^\circ$

Max. Lateral Tilt $\geq 20^\circ$

Head Rest up & down $\geq 45^\circ \geq 90^\circ$

Back Section up & down $\geq 80^\circ \geq 10^\circ$

Kidney Bridge Elevation ≥ 120 mm

Leg Section down and open $\geq 90^\circ \geq 50^\circ$

Foot Rest-can be kept horizontally or perpendicularly to the Leg Section.

Safe working load: 150kg

Universal Manual Operating Table: BT-RA028



Features:

304 stainless steel base cover and column cover, whole leg plate

Specification:

Dimensions of Table: 2050*500*750-1000mm

Range of Movements:

Trendelenburg & Reversed Trendelenburg: $\geq 30^\circ \geq 20^\circ$

Max. Lateral Tilt $\geq 20^\circ$

Head Rest up and down $\geq 45^\circ \geq 90^\circ$

Back Section up and down $\geq 75^\circ \geq 20^\circ$

Kidney Bridge Elevation $\geq 120\text{mm}$

Leg Section down and open $\geq 90^\circ \geq 50^\circ$

Foot Rest-can be kept horizontally or perpendicularly to the Leg Section.

Safe working load: 150kg

Universal Manual Operating Table: BT-RA029



Features:

Separate leg parts, height adjustable by hydraulic pump, backrest and footrest controlled by gas spring

Specification:

Overall size 2100*480*720-920mm;
stainless steel frame

Trendelenburg & Reversed Trendelenburg: $\geq 20^\circ \geq 30^\circ$

Right tilt: $\geq 18^\circ$, Left tilt: $\geq 18^\circ$

Head Section Raised from the horizontal: $\geq 45^\circ$

Head Section lowered from the horizontal: $\geq 90^\circ$

Leg Section Lowered from the horizontal: $\geq 90^\circ$

Leg Section opened: $\geq 90^\circ$, can be assembled

Back Section up and down $\geq 75^\circ \geq 18^\circ$

Kidney Bridge Elevated: $\geq 120\text{mm}$

Standard Accessories:

- 1 Anaesthetic Screen
- 2 Shoulder Rest
- 2 Arm Support
- 2 Body Support
- 2 Knee Crutch
- 1 Mattress

Electric Operating Table for C-arm: BT-RA038



Features:

- This table is suitable for ERCP, DSA operation.
- It adopts famous brand motors, smooth and silent operation.
- The height adjustment, longitudinal moving, left/right moving are all controlled by motors.
- The tabletop uses 40mm carbon fiber material that can have high definition fluoroscopy imaging effect.
- 125mm castors are easy to move.

Specification:

Dimension: 2400*500mm
 Height Adjustment: 800-1000mm
 Longitudinal moving: 800mm
 Left and right moving: 100mm



Electric Operating Table: BT-RA57



Features:

- This table is suitable for general and orthopaedics operation.
- End column design is very convenient for X-ray examination and C-arm photograph on different parts of body.
- It adopts famous brand motors, smooth and silent operation.
- The height adjustment, back section, Trendelenburg, lateral adjustment are all controlled by motors.
- The head and leg section are manual adjustment.
- Made of full premium 304 stainless steel.

Technical Parameter:

Dimensions: 2050*520mm
 Height Adjustment (electric): 750-1050mm
 Trendelenburg (electric): $\pm 25^\circ$
 Lateral Tilt (electric): $\pm 18^\circ$
 Back Section (electric): $+60^\circ/-30^\circ$
 Head Board (manual): $+45^\circ/-50^\circ$
 Leg Board (manual): $+15^\circ/-90^\circ$



Electric Operating Table for Ophthalmology: BT-RA35



Features:

electric operating table for Ophthalmology. with full affinity profile. It adopts full 304 stainless steel, excellent properties on anti-rust.

With doctor Chair

Technical Parameter:

Length/Width: 2080mm/550mm
 Lowest height of table top: ≤ 500 mm
 Height adjustment range ≥ 200 mm
 Head Rest(up/down): 45°/90°
 Footplate(up/down): 30°/30°
 Back plate(up/down): 45°/20°
 Power: 220v, 50Hz, 1.0Kw

Standard Accessories:

Anaesthetic Screen
 2 Shoulder Rest
 2 Arm Support
 2 Body Support
 2 Knee Crutch
 1 Mattress

Supine Surgery Operation Pad



Prone Position Pad



Lateral Position Pad



Orthopedics Tractor Table:BT-R002

Features:

- It can connect with operating table, which can do orthopaedics surgery and traction.
- It has the function of height adjustment , extending, C-arm fluoroscopy.
- Made of full premium 304 stainless steel.

Technical Parameter:

Length: 1700-2400mm
 Width: 480mm
 Min Height: 750mm-1000mm
 Back Section Raised: $\geq 70^\circ$
 Back Section Lowered $\geq 20^\circ$
 Traction Range: 1000mm
 Traction travel: 200mm



Carbon fiber Hanging Orthopedics Tractor Table:BT-R003

Features:

- It can connect with operating table, which can do orthopaedics surgery and traction.
- It has the function of height adjustment , extending, C-arm fluoroscopy.
- Made of premium 304 stainless steel and carbon fiber material.

Specification:

Dimension:1080*500mm
 Height Adjustment(manual): 650-1000mm
 Drawing Range:200mm
 Base Device Length:1100mm
 Leg Support Height:600-850mm
 Under frame Angel:0-180°



Hanging Orthopedics Tractor Table:BT-R005

Features:

- It can connect with operating table, which can do orthopaedics surgery and traction.
- It has the function of height adjustment , extending, C-arm fluoroscopy.
- Made of full premium 304 stainless steel.

Specification:

Dimension:1080*500mm
 Height Adjustment(manual): 650-1000mm
 Drawing Range:200mm
 Base Device Length:1100mm
 Leg Support Height:600-850mm
 Under frame Angel:0-180°



Carbon Fiber Spinal Surgery Positioner:BT-ROI

Prone position gel head cushion:

- 1.Maximum length of supporting: ≥ 70 cm
- 2.Opening distance of support surface:0~19cm
- 3.Flexion angle of spine:15°~75°
4. The maximum bearing capacity of chest support:135KG
- 5.Adjustable chest pad width:0-80mm
- 6.Supine head pad can be optional

Manual Carbon Fiber Spinal Surgery Positioner:

This equipment use carbon fiber material.It is anew radiolucent spine frame for spinal surgery,it is can be used in CT,MRI and non-magnetic film.



Carbon Fiber Spinal frame:BT-ROJ

Usage:

It is suitable for prone position, spine, and spinal surgery. It meets the transparent C-arm and facilitates the development of spine surgery.



Technical Parameters:

1. The four-point carbon fiber spine frame is made of full carbon fiber material, including the bottom plate, four-point support, cross bar, and screws, all of which are made of see-through carbon fiber material to meet the needs of spinal surgery. Suitable for both adults and children.
2. The size of the carbon fiber bottom plate is 700mm in length and 500mm in width. The size of the blue support is 230*160*80mm. The front and rear adjustment range of the support is 0-300mm, and the left and right adjustment range is 0-200mm.
3. The blue holder is made of 40mm high-density foam and 40mm memory foam, which can prevent pressure sores on patients during long-term surgery. It is covered with PU blue matte leather, which is easy to disinfect and clean, and can also be replaced.

Manual Spinal Surgery Positioner:BT-ROF

Technical Parameter:

Maximum supporting length: ≥ 70 cm
 Operating distance of support surface: 0-19cm
 Flexion angle of spine: -15° - 75°
 The head rest can be adjusted in height: 0-150mm
 The head rest can be adjusted distance: 0-300mm
 Adjustable chest pad width: 0-80mm
 The maximum bearing capacity of chest pad: 135kg
 The maximum carrying capacity of the head support: 10kg



Electric Spinal Surgery Positioner:BT-ROG

Technical Parameter:

Maximum supporting length: ≥ 70 cm
 Operating distance of support surface: 0-19cm
 Flexion angle of spine: -15° - 75°
 The head rest can be adjusted in height: 0-150mm
 The head rest can be adjusted distance: 0-300mm
 Adjustable chest pad width: 0-80mm
 The maximum bearing capacity of chest pad: 135kg
 The maximum carrying capacity of the head support: 10kg



Multi-purpose head rack:BT-ROD

Specification:

Leg adjustable range left&right:15cm
 Height adjustable range:45-67cm
 Adjustable range left&right(from central axis):37cm
 Head Rest adjustable range:360 $^{\circ}$



Head rack:BT-ROE

Specification:

Leg adjustable range left&right:15cm
 Height adjustable range:45-67cm
 Adjustable range left&right(from central axis):37cm
 Head Rest adjustable range:360 $^{\circ}$



Hand micro surgical frame /
upper limb micro surgical frame



BT-ROK

Feature...

It is suitable for any brand of surgical bedside rail. Size: 830 * 600 * 500-950(mm)



BT-ROL

Features:

It is suitable for any brand of surgical bedside rail. Size: 600 * 400 * 50(mm)

It is applicable to hand surgery and microsurgery, and provides support and other body position requirements for patients' arms.

Shoulder operating frame/Shoulder surgery chair: BT-ROM



Specification:

Material: 304 stainless steel or aluminum

Size: 520mm*580mm

Operating table side rail size

25mm*10mm,30mm*8mm,28.5mm*9.5mm,30mm*10mm,32mm*9mm,25*8mm

Back angle: -15°-+80°

Headrest adjustment range: 0-320mm

Required operating table width: 500-600mm

Stirrup pneumatic leg frame:BT-ROQ



Features:

- Cantilever length:100cm
- Application of the patient physique:under 150kg
- The angle of +90 degree;-35degrees on the adjustment angle of the cantilever up and down.
- 15 degree outside the angle of the cantilever horizontal adjustment is equal to 30 degree
- Adjustment range 330mm before and after the sheath

Knee joint knife holder

Model:BT-RON



Features:

- The pole has a diameter of 16mm, a length of 500mm and a transverse length of 250mm
- The distance between two sides is adjusted by gear.
- Purpose:For knee replacement, knee support, knee surgery and other operations.

Model:BT-ROP

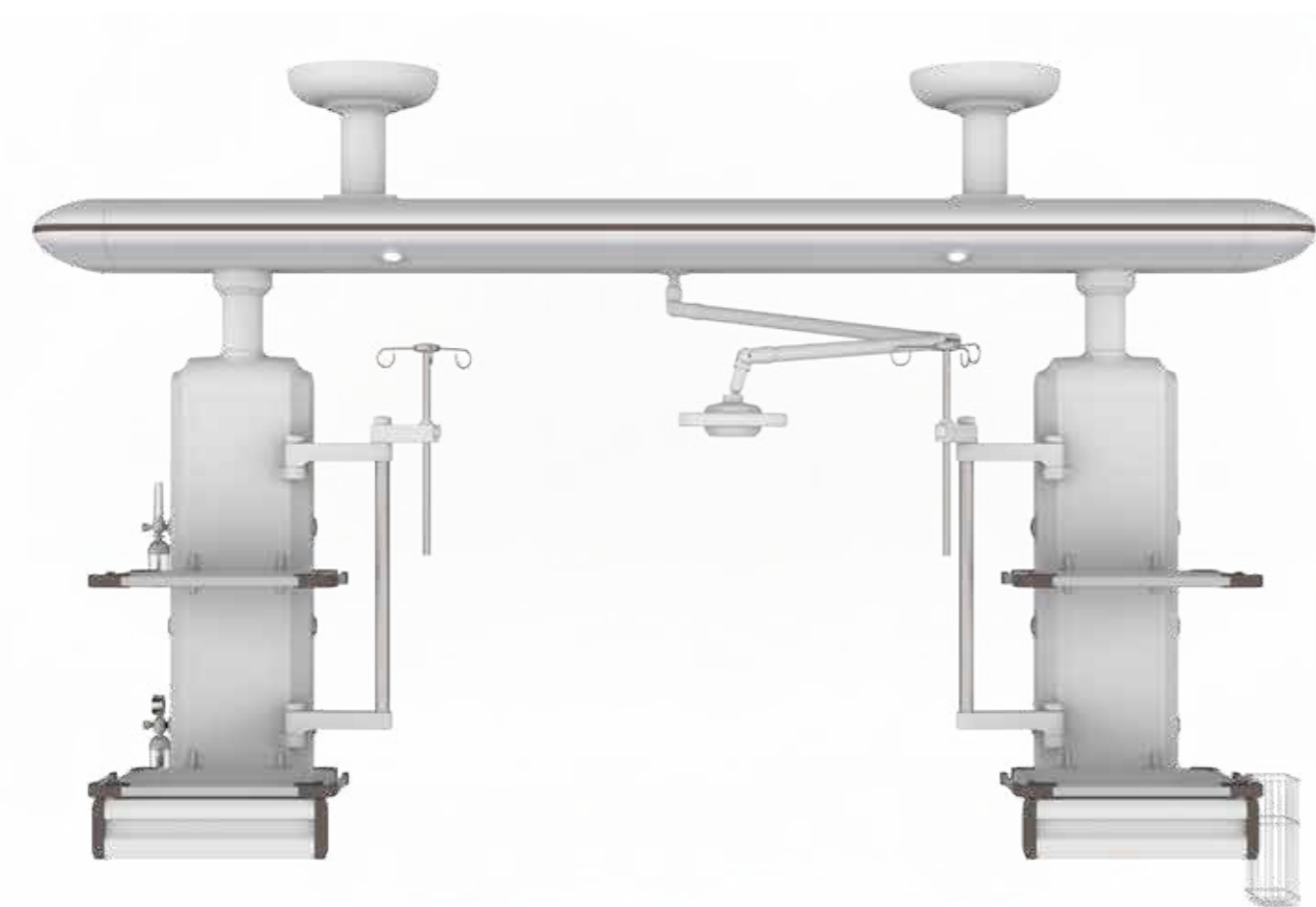


Features:

- The rod is 16mm in diameter and 500mm in length, and the transverse polyurethane pad is 250mm in length and 80mm in diameter
- Both sides are provided with knee joint positioning brackets, which can adjust the spacing
- Purpose:For knee replacement, knee support, knee surgery and other operations.

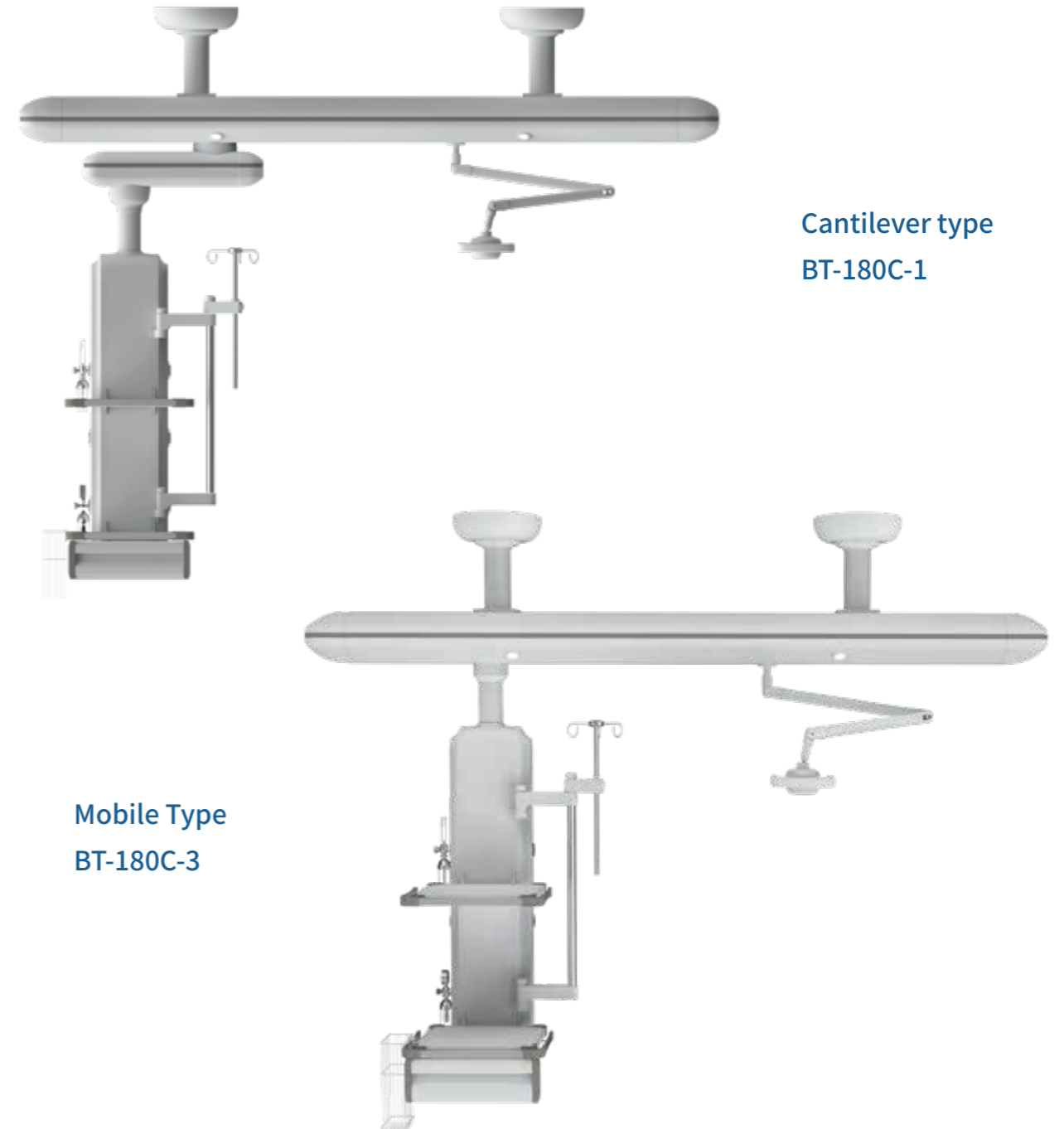
Dry and wet separation ICU pendant

It is a necessary medical rescue Auxiliary equipment in modern ICU wards, which is characterized by a reasonable dry and wet separation structure, dry,wet section is equipped with a multi-layer instrument platform and the height of the drawer is adjustable, and with flexible lifting infusion pump stand and infusion pole; all configurations can be adjusted upon request. The rotating part adopts brakes to prevent drifting, so that the medical staff can complete the emergency monitoring work with the fastest speed and time.



Suitable: ICU, NICU, PICU, EICU

Dry and wet in one ICU Pendant

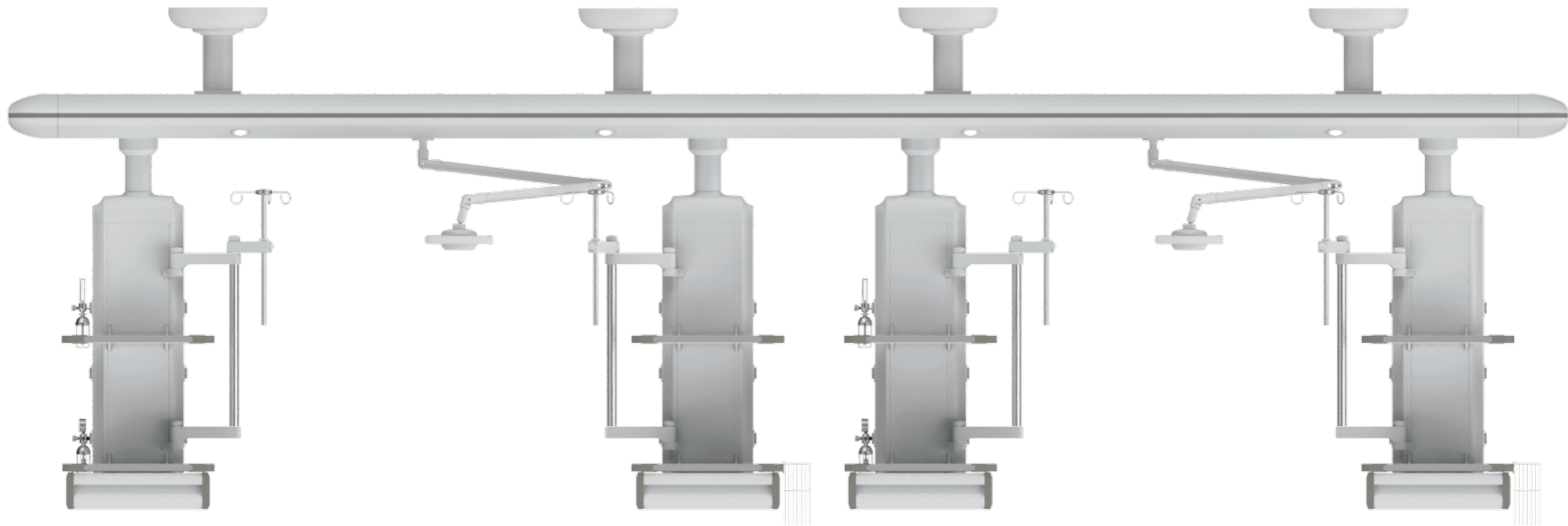


Cantilever type
BT-180C-1

Mobile Type
BT-180C-3

Suitable: ICU, NICU, PICU, EICU

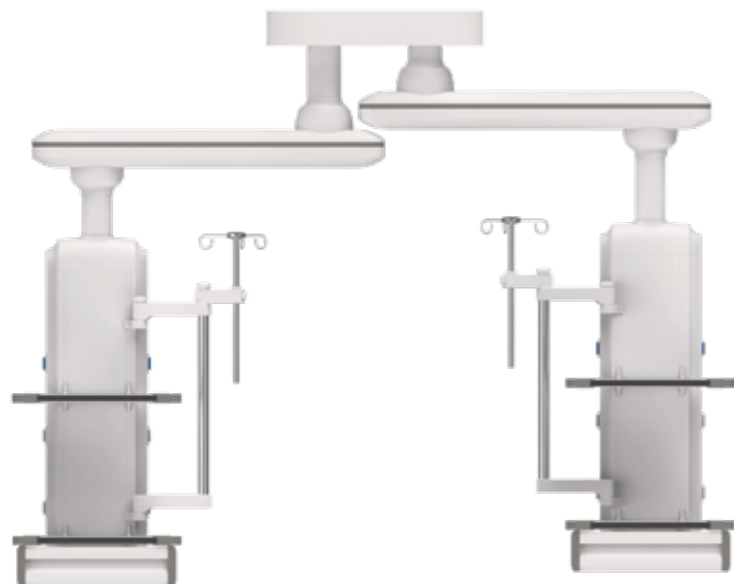
Optional: long cantilever treatment lamp, surveillance camera, high-end nursing system, general call system, monitor stand, etc.



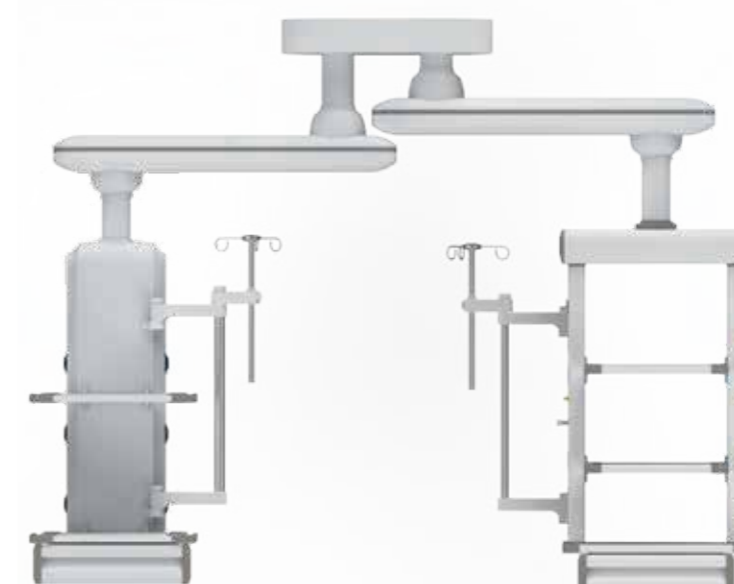
BT-460

The conjoined pendant is suitable for compact ICU space. Two or more suspension bridge modules can be connected end-to-end to improve the utilization of ICU space. Conjoined pendant, tailor-made personalized ICU tower bridge solution for medical staff.

The multi-arm combined pendant is suitable for compact ICU space. Its advantage lies in the combination of flexible cross arm and functional box, making full use of the space of ICU wards. Centralized and professional space arrangement maximizes the work efficiency of medical staff.



BT-450

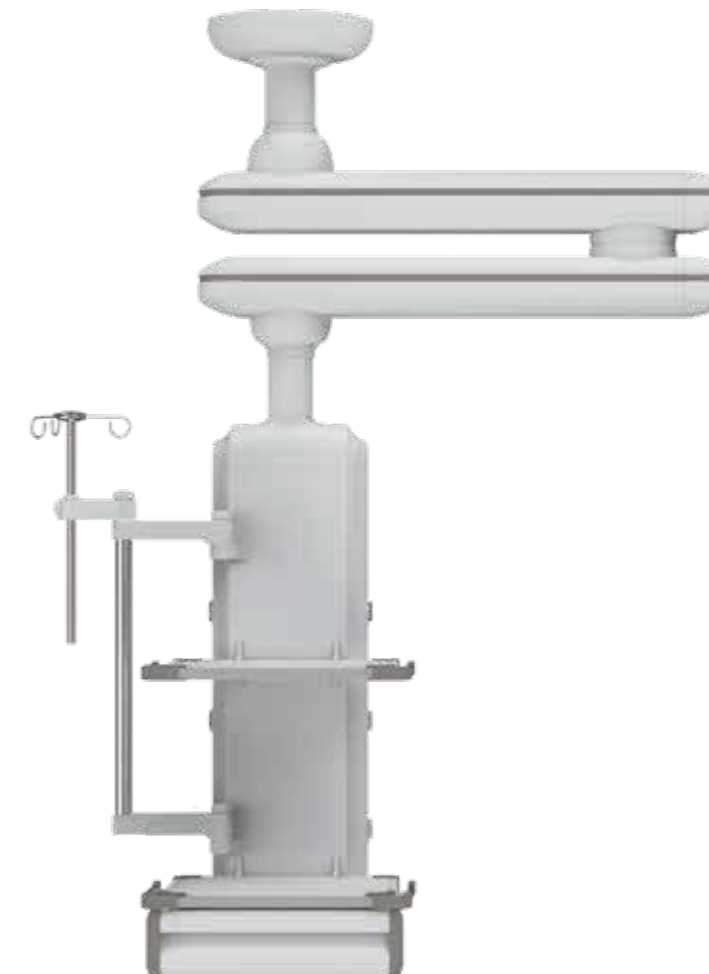


BT-400

With the development of digital operating room, high efficiency and safety cannot meet the requirements of users; its streamlined design, light and beautiful appearance, lightness and flexibility of operation have gradually attracted the attention of users. The single-arm pendant adopts imported antibacterial plastic powder as a whole to ensure the cleanliness of the operating environment while meeting the daily load-bearing requirements, strong materials, and cost-effectiveness. Its rich optional accessories greatly extends the clinical practicability.



Single Arm Pendant
BT-3600

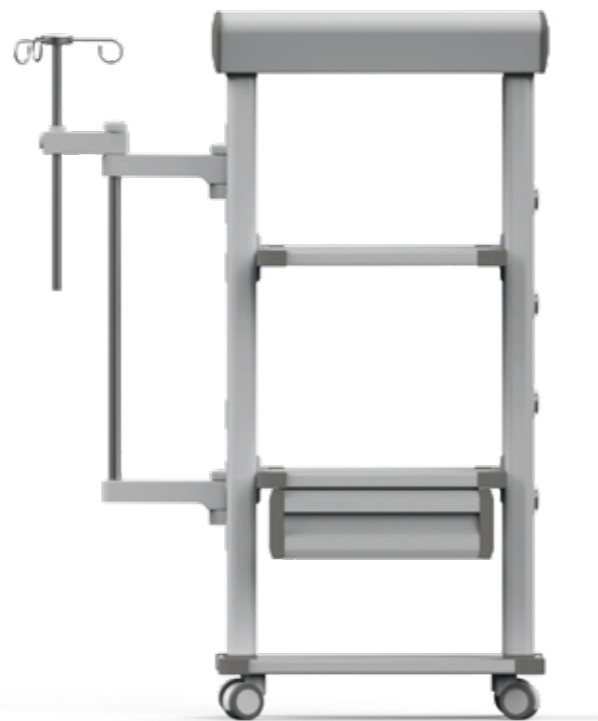


Single-arm Laparoscopic Pendant
BT-400H



Double-arm surgical pendant
BT-3600-2

The mobile pendant can be connected to an external power supply and medical air source, which is convenient to expand the insufficient supply of gas and electricity, and increase temporary beds. The medical-grade universal wheels move silent wheels, which are light and comfortable to move under high loads, and are convenient for medical staff to use in emergency, inspection or special periods.



**Mobile Pendant
BT-470**



**Anesthesia Pendant
BT-3500**

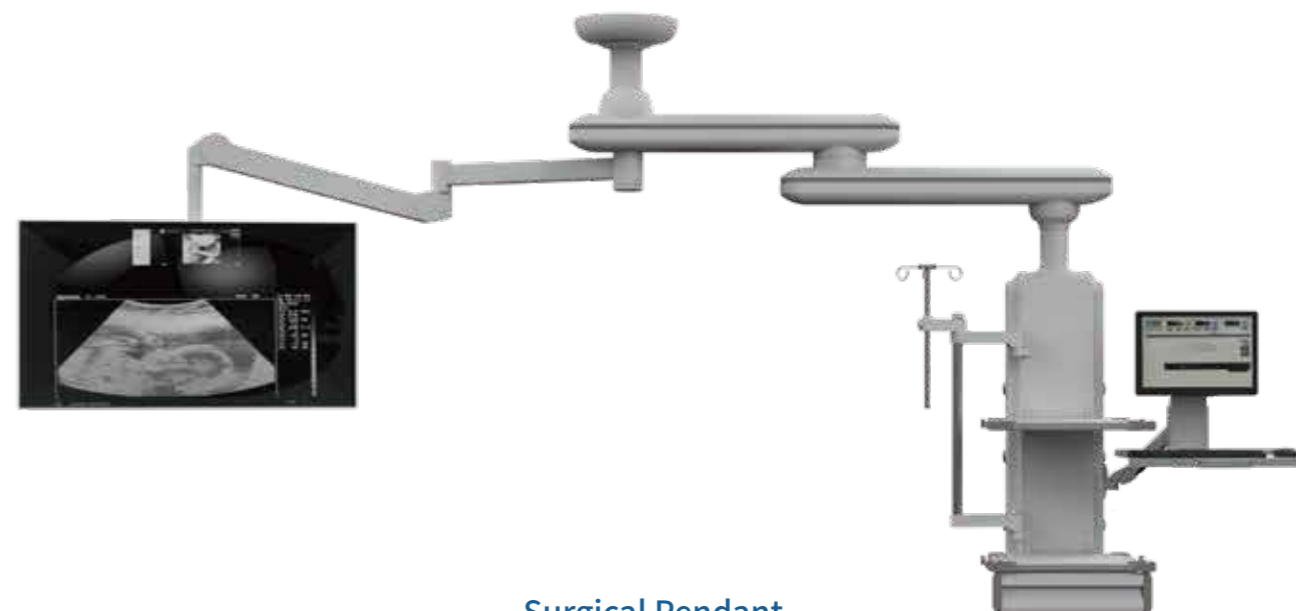
High-load anesthesia machine suspension bracket, which can carry an anesthesia machine up to 250KG, equipped with internationally accepted AGSS jet exhaust gas, suitable for anesthesia operations.



**Surgical Pendant
BT-580**



**Surgical Pendant
BT-590**



**Surgical Pendant
BT-480**

Applicable to intelligent information operating room, endoscopy center.

Medical Ventilator



BT-S1200 New

ICU Ventilator
15" TFT LCD touch screen

Ventilation modes:
IPPV, A/C, PCV, P-SIMV-PS,
V-SIMV-PS, APRV, PRVC,
SPONT/CPAP, PSV, Duolevel



BT-S1600

ICU Ventilator
10.4" TFT LCD screen

Ventilation modes:
IPPV; A/C; SIMV;
SPONT/CPAP; MANU

Anesthesia Machine



BT-AN01

10.4" colorful LCD screen
Gas source: O2, N2O, AIR

Ventilation modes:
IPPV, A/C, PCV, SIMV, SIGH, MAUN

BT-AN03

7" colorful LCD screen
Gas source: O2, N2O

Ventilation modes:
IPPV, A/C, SIMV, MAUN



Portable Ventilator for ambulance



BT-VR01

Feature:

Used in emergency department, department of gynaecology and obstetrics, ICU, transport, outdoor aid, per-hospital aid and beside the bed.

5.7 inch LCD screen.

2 gases, O2 and Air.

VCV, Spont, A/C, Sigh, SIMV, Manual.

Tidal volume: 50-1500mL.

Turbine Ventilator

B-VR07

Feature:

12.1 inch touch screen

Applied to adult, children and infant

Turbine driven.

Vt: 20-2000ml; Breathing rate: 1-100 bpm.

Ventilation type: IV & NIV

Modes: VCV, SIMV, SIGH, PCV, SIMV-PS, PSV, CPAP, BIPAP, APNEA, Manual, APRV(Optional)

Nebulization

Oxygen Remedy

Waveforms and loops zoom in/out, freeze, compare.



Anesthesia Machine

BT-AN21

Feature:

12.1 inch touch screen.

Air/O2/N2O gas source.

Vaporizer: 2 pcs (Isoflurane, sevoflurane)

Flowmeter: 5 tubes flowmeter

Gas source: Air/O2/N2O

Modes: VCV, SIMV-V, SIMV-P, MANUAL, A/C, PCV, PSV, STAND-BY.

VT: 20-1500mL.

Press/flow trigger.

Waveforms/loops zoom in/out, freeze, compare.

Event logging function; Head light; ACGO;

Altitude compensation function.

YOKE for N2O/O2.



BT-AN22

Feature:

Display screen:10.1 inch touchable screen

Vaporizer: 2 pcs (Isoflurane, sevoflurane)

Flowmeter: 5 tubes flowmeter

Gas source: Air/O2/N2O

Back-up battery: Up to 3 hours

Ventilation modes: AC,VCV,SIMV,MANUAL,PCV,PSV,STAND-BY

PEEP:3-30cmHiO (Electronic control)

waveforms P-T,F-T,V-T,loops of P-V,V-F,F-P

Altitude compensation function

Optional:Yoke/AGSS

Tidal Volume:20-1500ml

I/E:4:1-1:8



Multi-Parameter Patient Monitor



BT-PM8A

Feature:

- 5 Standard parameters: ECG, NIBP, SpO2, RESP, PR
- 7 inch high resolution color TFT LCD display
- Real time S-T segment analysis, pace-maker detection
- Indication of incorrect manipulation and malfunction analysis
- Capture 2-hour dynamic trend
- Up to 400 groups of NIBP list, 6000 seconds ECG waveform recall, 60 alarm event records recall, 7-day trend chart in storage
- Built-in rechargeable lithium battery, 2-hour working capability
- Option: TEMP, Thermal printer

Feature:

- 6 Standard parameters: ECG, 2-TEMP, NIBP, SpO2, RESP, PR/HR
- 12.1 inch high resolution color TFT LCD display
- Real time S-T segment analysis, pace-maker detection
- Indication of incorrect manipulation and malfunction analysis
- Patient info input management function
- Multi-lead ECG waveforms display in phase
- Large volume of tabular and graphic trends information storage and easy to recall
- Capture dynamic waveforms
- Up to 2 hours working capacity of built-in rechargeable lithium battery
- Unique accessory management cabinet
- Option: 2-IBP, ETCO2, Built-in recorder, cart, wall shelf



BT-PM8B



BT-PM8G

Feature:

- 6 Standard parameters: ECG, 2-TEMP, NIBP, SpO2, RESP, PR/HR
- 12.1 inch high resolution color TFT LCD display
- Real time S-T segment analysis, pace-maker detection
- Indication of incorrect manipulation and malfunction analysis
- Patient info input management function
- Multi-lead ECG waveforms display in phase
- Large volume of tabular and graphic trends information storage and easy to recall
- Capture dynamic waveforms
- 2 hours working capacity of built-in rechargeable lithium battery
- Unique accessory management cabinet
- Option: 2-IBP, ETCO2, Built-in recorder, cart, wall shelf

Feature:

- 6 Standard parameters: ECG, 2-TEMP, NIBP, SpO2, RESP, PR/HR
- 12.1 inch high resolution color TFT LCD display
- Real time S-T segment analysis, pace-maker detection
- Indication of incorrect manipulation and malfunction analysis
- Patient info input management function
- Multi-lead ECG waveforms display in phase
- Large volume of tabular and graphic trends information storage and easy to recall
- Capture dynamic waveforms
- Up to 2 hours working capacity of built-in rechargeable lithium battery
- Unique accessory management cabinet
- Option: 2-IBP, ETCO2, Built-in recorder, cart, wall shelf



BT-PM8I



BT-PM8H

Feature:

- 6 Standard parameters: ECG, 2-TEMP, NIBP, SpO2, RESP, PR/HR
- 14 inch high resolution color TFT LCD display
- Real time S-T segment analysis, pace-maker detection
- Indication of incorrect manipulation and malfunction analysis
- Patient info input management function
- Muti-lead ECG waveforms display in phase
- Large volume of tabular and praphic trends information storage and easy to recall
- Capture dynamic waveforms
- Up to 2 hours working capacity of built-in rechargeable lithium battery
- Unique accessory management cabinet
- Option: 2-IBP, ETCO2, Built-in recorder, cart, wall shelf



BT-PM01 & BT-PM02

Feature:

- 7 or 8 inch high resolution color TFT LCD display
- Exquisite design, suitable for moving operation
- Various interfaces: standard screen, trend screen, oxyCRG screen, NIBP list screen, big front screen
- Real-time S-T segment analysis, pace-maker detection
- Up to 400 groups NIBP list, 60 alarm event records recall in storage
- Built-in rechargeable lithium battery, 2-hour working capability
- Capture 2-hour dynamic trend
- Standard configuration: SPO2, PR, NIBP, ECG, RESP, TEMP
- Option: ETCO2

Feature:

Measurement parameters for optional:

- NIBP,Spo2,Temp
- NIBP,Temp
- Spo2,Temp .
- Two measurements mode: Spot,Monitoring
- Data storage capabilities, support for historical data view and trend chart back to see
- In monitoring mode, can continuously record 48 hours of measurement data
- In spot mode, 100 users ID, each user can store 200sets data
- Support audio and visual alarm, support to set alarm upper and lower limit values



Handheld vital sign monitor
BT-PO7A



Handhold Pulse Oximeter
BT-PO8C

Feature:

- Portable, light, and easy to operate
- Intelligent parameter monitoring interface
- Automatically power-off
- Audible and visual alarms
- Up to 500 groups list of data to storage, and 80 hours data storage and review



Table-top Pulse Oixmeter
BT-PO810

Features:

- Standard Configuration: SpO2, PR numerical value, SpO2 waveform
- High resolution 4.3' ' color LCD screen
 - Compact and portable, allowing for uninterrupted monitoring
 - AC power supply, with built-in lithium battery
 - Adjustable audible and visual alarms
 - Storage and review of patient' s trend data up to 36 hours
 - Applicable to adult, pediatric and neonatal patient
 - Convenient and quick in inquiring measurement data
 - USB data upload
- Options: printer, NIBP,ETCO2



Fingertip Pulse Oximeter
BT-PO8M

Features:

- Dual color OLED display with four directions
- Compact and power-saving
- Battery capability indication
- High accuracy and durability
- SPO2, PR, SPO2 bar graph and pulse waveform display
- Power supply: two standard AAA batteries
- Operation menu for function setting
- Automatic swich-off function for power-saving
- Approved by CE



Biphasic Defibrillator

BT-8000A

Standard:Manual Defibrillation, Battery, Voice Prompt



Biphasic Defibrillator Monitor

BT-8000C

Standard:Manual Defibrillation,ECG,NIBP, SPO2,PR,Print,Battery,Voice Prompt

Optional:AED



Biphasic Defibrillator Monitor

BT-8000D

Standard:Manual defibrillation,ECG,Print, Battery,Voice Prompt

Optional:AED,SpO2



BT-AED02 AED

8inch screen, AED Model, Manual Model, Monitoring, ECG, Printer



BT-AED01 AED



BT-AED05 AED



BT-AED08 AED



**3 channel ECG
BT-ECG30**

Feature:

- 5.0" color TFT LCD display
- Simultaneous 12 leads acquisition and 1, 1+1, 3 channel (Manual/Auto)
- recording with high resolution thermal printer
- Manual/Auto working modes
- Use digital isolation technology and digital signal processing
- Baseline stabilization inspection
- Full alphanumeric silicon keyboard
- Support U disk storage
- Support USB (Optional)

Feature:

- 12 channel ECG machine with interpretation
- 7" color TFT LCD display
- Simultaneous 12 leads acquisition and (Manual/Auto)
- recording with high resolution thermal printer
- Manual/Auto working modes
- Use digital isolation technology and digital signal processing
- Baseline stabilization inspection
- Full alphanumeric silicon keyboard
- Support U disk storage
- Support USB function (Optional)



**6 Channel ECG
BT-ECG60**



**12 Channel ECG
BT-ECG12**



**3 Channel ECG Machine
BT-ECG30C**

Feature:

- 7 inch high resolution color touch screen
- 12-lead simultaneous acquisition and display
- ECG Automatic measurement and interpretation function
- Complete digital filters, resisting baseline drift, AC and EMG interference
- Compact and lightweight design
- Support USB flash disk and micro SD card to extend memory
- Software upgrade via USB/SD card
- Built-in rechargeable Li-ion battery

Feature:

- 9.7 inch HD LCD display with touch screen
- QWERTY keyboard and short cut function key
- 12 leads synchronous acquisition and display
- Printing Mode: Manual, Auto 3*4, 3*4+R, 3*4+3R, 6*2, 6*2+1R, 12*1
- More than 1000 data built-in storage, support SD card and USB extended
- Support wired and wireless connectivity via HL7, XML and DICOM
- Built-in rechargeable battery support more than 8 hours continuous work or 500 ECG recording
- Support A4 report printing by directly connecting with Laser printer
- Support thermal A4 report printing
- Send ECG report to PC or Smartphone via FTP directly



**6 Channel ECG Machine
BT-ECG60C**



**12 channel touch screen ECG
BT-ECG12E**

Electrosurgical Unit BT-ES07



- Remote fault diagnosis function.
- Full-function power automatic compensation.
- Automatic monitoring function and mistake indication function.
- High definition large LED indication, with audio & visual indication.
- Standard endoscopic interface comply with any brand endoscopies.
- Power-off protection circuit, which remembers last time output setting value.
- Underwater cut function, suitable for use with argon system, endoscope, uteroscope etc including organic cut in rich fat area.
- Six working modes, Monopolar output controlled by hand switch or foot switch; bipolar output controlled by foot switch.

Parameters:

Pure Cut: 400W
 Blend Cut1: 250W
 Blend Cut2: 200W
 Spray Coag: 120W
 Coagulation: 80W
 Bipolar coag: 70W

Accessories:

Double footswitch: 1pc
 Hand switch: 2pcs
 Electrode plate(Disposable): 2pcs
 Electrode plate cable: 1pc
 Probe set: 1set
 Bipolar forceps: 1pc
 Bipolar forceps cable: 1pc
 Power cable: 1pc

Reusable Video Laryngoscope BT-VL01



Disposable Video Laryngoscope BT-VL02



Appearance: Compact and Portable video laryngoscope with integrated LED light source and camera.

Function:	Real-time view of the airway and tube placement
Display size:	3.5"LCD Full View
Resolution:	640*480 (RGB), 2M pixel high resolution
Camera type:	CMOS
Image Output:	Upload picture and video by USB port to computer
Battery Type:	Rechargeable Lithium Battery
Long working time:	130 minutes continuous working time



BT-PM9A

12" Fetal Monitor

Standard parameters:

TOCO,FHR,FM

Optional:

Twin Monitoring,FAS(Fetal Acoustic Simulator)

Feature:

- Light and compact design, simple to use front panel controls
- 12.1" TFT Colour screen ,folding 90 degree
- The system setup can be done very easy and can be stored automatically
- The internal line 152mm thermal printer can records FHR ,TOCO ,The life exceed over 20 years
- A standard patient event marker and a clinical event marking button to separately mark Clinical events
- Auto Fetal movement are available
- Multi-crystals ,wide beam form, high sensitivity ultrasound transducer ,low ultrasound power, Safer to the fetal
- AC or LI-battery operated
- More than 12 hours data storage, then can be played and reprinted
- Build-in interface to the central nurse station

BT-PM9B

12" Maternal & Fetal Monitor

Standard:SpO2,MHR,NIBP,TEMP,

ECG,RESP,TOCO,FHR,FM



BT-PO70



BT-PO71



BT-PO72



BT-PO73



BT-PO75

Fetal Monitor

Function	BT-PO70	BT-PO71	BT-PO72	BT-PO73	BT-PO75
Display	No	B/W	B/W	Colour	Colour
Back light	No	Yes	Yes	Yes	Yes
Build-in speaker	Yes	Yes	Yes	Yes	Yes
Battery indicator	Yes	Yes	Yes	Yes	Yes
Curve display	No	No	No	Yes	Yes
Auto power off	Yes	Yes	Yes	Yes	Yes
Alkalinity battery	Yes	Yes	No	Yes	No
Ni-MH battery	No	No	Yes	No	Yes
Adapter	No	No	Optional	No	Optional
USB charging line	No	No	Optional	No	Optional
Voice	No	Optional	Optional	Optional	Optional
2.0MHz probe	Yes	Yes	Yes	Yes	Yes
3.0MHzprobe	Optional	Optional	Optional	Optional	Optional
Carry Bag	Optional	Optional	Optional	Optional	Optional

Infusion Pump

BT-IP900

Feature:

- 4.3" color TFT LCD screen (LED backlight), with resolution 272×480
- Three working modes: Rate/Time/Volume mode
- Drug library with 210 kinds of medicine
- Storage 1500 history records
- Heating function, suitable for infusing in winter or there is requirement for the fluid medication temperature
- Support multi language display
- A variety of visible and audible alarm, make infusion more safe
- Standard: Drug library, History record, Heating function, Drip detector, Remote control
- Optional: SpO2, NIBP



Syringe Pump

BT-SP500

Feature:

- 4.3" color segment LCD screen, backlight display, can be used in various lighting conditions
- Simultaneous display: Time, Battery indication, Injection state, Mode, Speed, Injection volume and time, Syringe size, Alarm sound, Block, Accuracy, Body weight, Drug dose and liquid amount
- Speed, time, volume and drug amount can be adjusted via remote control, easier operation, save time of doctor and nurse
- Advanced technology, based on Linux system, more safe and steady
- Multi injection modes: Volume/Time/Body weight mode
- Visible and audible alarms cover all abnormal conditions

Infusion Pump

BT-SC113

Feature:

- 3.5-inch LCD screen, Multiple languages Customization
- Wide range of flow rate: 0.01-2000ml/h
- Comprehensive audible and visual alarm function, adjustable volume, visible from 360°
- Ultrasonic bubble detection technology
- Change flow rate without stopping the current task
- Optional: Thermostat function, Drop sensor



Syringe Pump

BT-FC113

Feature:

- 3.5 -inch LCD screen, Multiple languages Customization
- Wide range of flow rate: 0.01 -2000ml/h
- Comprehensive audible and visual alarm function, adjustable volume, visible from 360°
- Automatic recognition of syringe specifications (5ml,10ml,20ml,30ml,50/ 60ml)
- Change flow rate without stopping the current task
- Drug library mode, customized



Telefusion

- Unified power supply management, high efficiency of bedside space;
- Modular design for each infusion unit, plug and play;
- Stack-able adjustable, easy-to-mount, best for swift transportation;
- Movable and fixable tablet, adaptable for better work efficiency;
- Availability for instant checks of infusion logs, curves, and the execution of doctor's order;
- Seamless relay of infusion between multiple infusion units, to avoid fluctuations of blood;
- drug concentration and facilitate patient recovery;
- Remote monitoring available for higher nursing efficiency and medical safety;
- Capability of docking with diverse HIS, to empower hospital information construction.



Feeding pump BT-EA1



- Unique rotary number setter, easy and quick parameter setting
- Swift priming and flushing function available
- Memory and recall function for last setting
- Ultrasonic bubble detection technology
- Instant detection of dynamic pressure, facilitating clinical monitoring & prediction, and lowering occlusion risks
- Embedded handle for better space- efficiency
- Exclusive/Universal feeding sets, higher feeding accuracy and lower occlusion risks

Blood & Infusion Warmer BT-SW03

It is to warm the blood or fluid and to relieve the patient's hyperthermia; it is widely used before operation, during operation and after operation in ICU, NICU, Pediatric Dept., Emergency Dept., and Outpatient Dept., for heating blood or infusion. Different kinds detachable heating profiles, direct interface and simple operation makes it user friendly.



Vein Finder BT-VF01

The vein finder mainly takes the advantage of the blood hemoglobin absorption for near-infrared light stronger than other tissues, it makes the superficial blood vessels visualized through the vein visualization technology; it is helpful to find, evaluate and position the superficial blood vessels, etc.; it can effectively improve patient's satisfaction, reduce nurses' psychological pressure, reduce work intensity, and protect the doctors and patients from venipuncture issues.



Warming Blanket BT-NB01

It utilizes the convection of air to transmit the hot air generated by the main unit to the disposable blanket through the pipeline, so that the heat energy is evenly distributed and transmitted to the patient's body surface covered by the blanket to achieve the effect of heat preservation or heating for prevention and treatment of hypothermia in patients. It is made of non-woven fabric and melt-blown cloth delicate material.



Electric Suction Device



BT-SUD1



BT-SUC1

Feature:

- BT-SUD1 with plastic shell , BT-SUC1 adopts high quality cold plate shell.
- Imported membrane pump with longer life
- Low noise and maintenance-free
- With overflow protection unit to prevent liquid from getting into pump body
- Be equipped with hand switch and foot switch

Technical parameter:

Negative pressure:	≥0.09MPa(680mmHg)
Suction rate:	≥40L/min
Negative pressure:	0.013MPa ~ 0.09Mpa(680mmHg)
Suction bottle:	2500ml x 2
Noise:	≤55dB
Input power:	400VA
Pump structure:	Diaphragm type
Working type:	intermittent loading,continuous operation

Electric Suction Device



BT-SUC2

Feature:

- Imported diaphragm pump
- The appearance and the internal structure are completely upgraded, and the modeling is graceful and the structure is reasonable
- All ABS plastic shell
- Bottle is easy for cleaning & disinfection
- Oil-free pump is maintenance-free
- Low noise
- With an overflow protection
- Working type:intermittent loading,continuous operation

Technical parameter:

Suction rate:	≥40L/min
Negative pressure:	0.013MPa ~ 0.09Mpa(680mmHg)
Suction bottle:	2000ml x 2(plastic bottle)
Noise:	≤60dB
Input power:	400VA
Pump structure:	Diaphragm type

Electric Suction Machine



BT-SUC3



BT-SUCV

Feature:

- BT-SUCV all plastic shell with plastic bottles, BT-SUC3 adopts cold plate shell.
- Imported membrane pump with longer life
- Low noise and maintenance-free
- With overflow protection unit to prevent liquid from getting into pump body
- Be equipped with hand switch and foot switch

Technical parameter:

Negative pressure:	$\geq 0.09\text{MPa}(680\text{mmHg})$
Suction rate:	$\geq 40\text{L}/\text{min}$
Negative pressure:	$0.013\text{MPa} \sim 0.09\text{Mpa}(680\text{mmHg})$
Suction bottle:	2500ml x 2
Noise:	$\leq 55\text{dB}$
Input power:	300VA
Pump structure:	Diaphragm type
Working type:	intermittent loading, continuous operation

Emergency portable suction unit

Feature:

- AC/DC, can use in car
- battery lasts for more than 2 hours
- AC DC switch automatically
- imported diaphragm pump
- indication for battery full charge
- automatically stop when battery full charge
- small size and low noise
- with an overflow protection
- oil-free pump is maintenance-free

Technical parameter:

Air pumping efficiency:	$\geq 28\text{L}/\text{min}$
Capacity of liquid vessel:	1000ml
Negative pressure:	$0.013\text{MPa} \sim 0.09\text{Mpa}(680\text{mmHg})$
Input power:	400VA
Pump structure:	oil-free self-lubricated pump
Noise:	$\leq 55\text{dB}$
Work mode:	intermittent load continuous operation



BT-SUA5

Low negative pressure suction machine

Feature:

Especially designed for low pressure in hospital, used for suctioning of thick liquid for newborn babies.

Technical parameter:

Suction rate:	$\geq 900\text{mL}/\text{min}$
Negative pressure range:	0-25Mpa
Suction bottle:	1000ml
Input power:	18VA
Noise:	$\leq 55\text{dB}$



BT-SUA7

Mobile electric suction device



BT-SUA6

Feature:

- Imported membrane pump with longer life
- Bipolar negative pressure control, no trauma
- With a bleed valve to prevent damage to the mucous membrane
- Low noise and maintenance-free
- With overflow protection unit to prevent liquid from getting into pump body
- Be equipped with hand switch and foot switch
- Adopts all-plastic shell, beautiful and generous
- Double vacuum negative shows negative pressure of the gas cylinder and the negative pressure bottle.

Technical parameter:

Negative pressure:	≥0.09MPa(680mmHg)
Suction rate:	first level ≥35L/min,second level≥15L/min
Negative pressure:	0.013MPa ~ 0.09Mpa(680mmHg)
Suction bottle:	500ml x 2 2500mlx 2
Noise:	≤55dB
Input power:	400VA
Pump structure:	Diaphragm type
Working type:	intermittent loading,continuous operation

Electric sputum suction device

Used for suctioning sputum and other thick secretions in hospitals, and may also be used for fist aid in the household.



BT-SUA2



BT-SUA3

Feature:

- Diaphragm pump
- All ABS plastic shell
- Bottle is easy for cleaning & disinfection
- Oil-free pump is maintenance-free
- Small size and low noise
- With an overflow protection

Technical parameter: BT-SUA2

Negative pressure:	0.013-0.07Mpa(600mmHg)
Suction rate:	≥15L/min
Suction bottle:	1000ml
Input power:	150VA
Noise:	≤50dB

BT-SUA3

Negative pressure:	0.013(600mmHg)
Suction rate:	≥15L/min
Suction bottle:	1000ml
Input power:	150VA
Noise:	≤55dB

Oxygen concentrator



BT-OC06
5L/8L/10L



BT-OC02
20L/30L/40/60L



BT-OC01
5L/8L/10L Single Flow



BT-OC01
5L/8L/10L Dual Flow

X-ray viewer



Model	BT-VLED1T	BT-VLED2T	BT-VLED3T
Input voltage/frequency Adapter	Input AC110-240V~50Hz		
Product input voltage	DC/24V		
Rated power	30W	60W	90W
Input interface standard	DC socket		
Brightness control	three-speed cycle dimming		
Light source type	high-efficiency LED		
Automatically extinguish without operation	30mins		
Viewing screen function	automatic induction of inserts, low brightness in standby, brightness memory		
Dispersion coefficient of viewing screen light	>90%		
Continuous working time	24H		
Average brightness of observation screen	300-3000cd/n		
Brightness uniform value coefficient	>85%		
Applicable film types	ordinary analog X-ray film; high-density digital X-ray film; mammography breast medical film; CT film		
Service environment	Environmental illumination <100lx		
Installation method	wall-mounted/bracket type (optional)		
Observation screen size (Length x height mm)	360X440	720X440	1080X440
Frame size (Length x height x width mm)	458X508X40	818X508X40	1178X508X40

Compersor Nebulizer

BT-NEB09

Technical parameter:

Size:	223*150*108mm
Max Pressure:	2.5-3.0 bar
Operation Pressure:	0.8-1.0 bar
Free air flow:	13lpm
Motor work life:	3000 hours
Mode of Operation:	Non-Stop
Medication Size:	< 0.5-5um
Nebulizer Rate:	>0.30ml/min
Sound level:	<54dB(A)



Compersor Nebulizer

BT-NEB10

Technical parameter:

Size:	223*150*108mm
Max Pressure:	2.5-3.0 bar
Operation Pressure:	0.8-1.0 bar
Free air flow:	12lpm
Motor work life:	5000 hours
Mode of Operation:	Non-Stop
Medication Size:	< 0.5-5um
Nebulizer Rate:	>0.30ml/min
Sound level:	<53dB(A)



Dynamic ECG Systems

BT-DE01

Specification:

Lead mode:	standard 12 leads
Sampling accuracy:	12bit
Recording time:	48h
Power supply:	1 AAA size battery
Scale voltage:	1mV ± 5%
Standard Sensitivity:	10mm/mV ± 5%
Noise level:	≤30 μV
CMRR:	≥60dB
Low-frequency characteristics:	Time constant ≥3.2s
Scan speed:	25mm/s+ 5%
Enduring polarization voltage:	add ± 300mV DC polarization voltage, the sensitivity shift is no more than ± 10%.
Least measure signal:	50μV p-p
Product safety type:	Type BF applied part(internally powered equipment)
Dimension:	80.5mm(L)*59 5mm[W]*22mm[H]
Net Weight:	61. 5g (Without battery)



Vascular Doppler

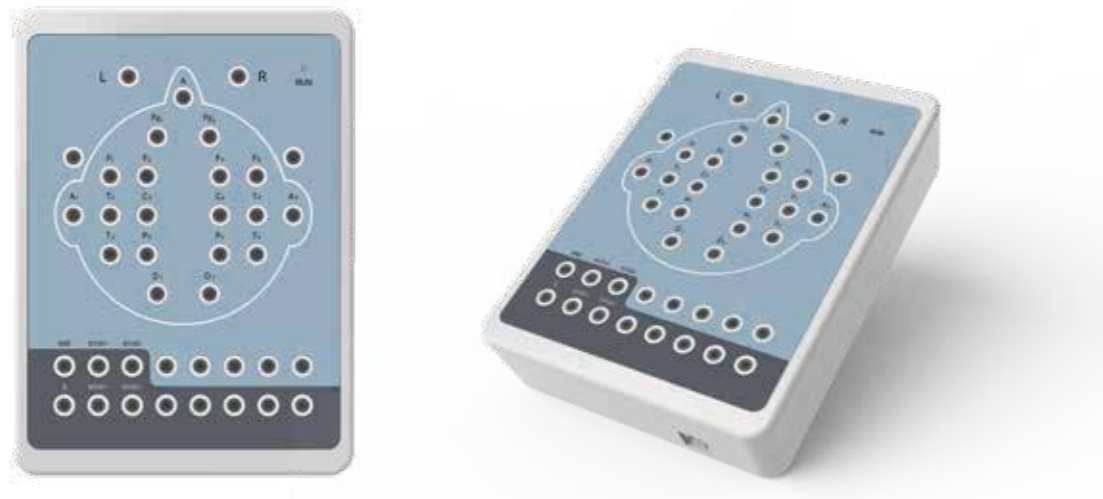
BT-VD01

- Sensitive special purpose vascular probe
- Compact design and easy operation
- Sound output with earphone and/or speaker
- High performance, clear sound quality
- Low ultrasound dosage
- Display cursor



EEG

BT-EEG01



Digital Brain Electric Activity Mapping collects EEG signal with electrodes, via integrated amplification, A/D transformation, PC auto-analysis, FFT, to form electroencephalogram that displays with color depth. The product is applicable for checking such diseases as epilepsy, intracranial inflammation, cerebrovascular diseases and brain tumors.

Ambulatory Blood Pressure Monitor

BT-BP10

It is a handheld ambulatory blood pressure monitor, which is designed according to oscillography theory. The device could monitor human body blood pressure up to 24 hours continuously and dynamically, providing accurate basis for the diagnosis. It is applicable for using in hospital, clinic and other medical institutions.



CPAP



Bubble CPAP BT-NLF01 (with medical air compressor)

Bubble CPAP BT-NLF01 (without medical air compressor)

Bubble CPAP BT-NLF02 (built in air compressor)

Feature:

Nasal Continuous Positive Airway Pressure (NCPAP) is a form of positive airway pressure ventilation with nasal prongs to keep the airways continuously open in people who are able to breathe spontaneously. It commit to respiratory care for premature, neonate, pediatric with nasal prongs and are widely applied in ICU, NICU, PICU, etc.

Model	BT-VLED1T	BT-VLED2T
FiO2	21%-100% (± 3%)	21%-100% (± 3%)
CPAP	3-10cmH O	3-10cmH O
Flow	2-18LPM	1-10LPM
Noise	≤55 dB(A)	≤55 dB(A)
Gas source	Air/Oxygen@0.3-0.4MPa	Air/Oxygen@0.3-0.4MPa
Alarm	When gas supply pressure difference > 0.1 MPa	
Air compressor	Outside	Built-in

Air-Oxygen Blender

BT-NLF03

- Accuracy: +/- 3%
- FiO2 Range: 21% ~ 100%
- Flow: 2LPM~18LPM(For infant) or
6LPM~60LPM(For adult)
10LPM~120LPM(For adult)
- Number of output port: Single
- Pressure of oxygen and air: 0.3MPa~0.4MPa
- Alarm: When supply pressures differ by 0.1Mpa
- Bleed: 3LPM



Infant Resuscitator

BT-NR101

- With safe, precise and controllable PIP (Peak Inspiratory Pressure) and PEEP (Positive End Exploratory Pressure), Pigeon Infant Resuscitators are easy to operate, and can provide temporary breathing support. It is crucial for NICU units, Nurseries, Delivery and Transport System.
1. Compact, portable and easy to operate.
 2. With a precise mamometer, the PIP and PEEP can be monitored easily and accurately.
 3. The delivered pressures would not be influenced by the operator's experience, training, attention and level of fatigue.



High Flow Heated Respiratory Humidifier

BT-PV02

- Ultratarge touch screen: BT-PVO2 is equipped with a 4.3-inch touch screen, which allows easy and quick operation by touch and navigation knob.
- Electronic Air-O2 mixer system: easy to set up flow rate and O2 concentration.
- Intuitive UI design: large font, easy for caregiver to operate and observe.



CPAP/APAP/CPAP For Sleep Apnoea Therapy

- 3.5" Colorful LCD screen
- Real-time data monitoring
- SpO2 supervisor
- Lower dBA
- Heating Humidifier
- Separable design for host and humidifier
- Mode: CPAP(BT-PV05)
APAP, CPAP(BT-PV03)
CPAP, S, AutoB(PV06)

