

# Equipamiento Médico



# Contents

01. Autoclave Sterilizer	P3	15. Clinical Lab Equipments	P28-30
02. Anesthesia Machine	P4	16. Microscope	P31
03. Ventilator	P5-6	17. Dental Equipments	P32-33
04. Operation Lamp	P7-8	18. Endoscope	P34-35
05. Operation Table	P9-11	19. ECG&EEG&EMG	P36-37
06. Patient Monitor	P12-13	20. Oximeter	P38
07. Electrosurgical Unit	P14	21. Dialysis Machine	P39
08. Defibrillaor	P15	22. Oxygen Generator	P40
09. Infusion&Syringe Pump	P16-17	23. Vet Surgical Equipments	P41
10. Suction Machine	P18	24. Vet Cage	P42
11. Infant Care Equipments	P19-20	25. Vet Ultrasound Scanner	P43
12. X-ray	P21-22	26. Vet X-ray Machine	P44
13. Hospital Furniture	P23-24	27. Pet Beauty Equipments	P45
14. Ultrasound Scanner	P25-27		



# Autoclave



HTS-T24J Table Top Autoclave (24L)



HTS-A Table Top Autoclave (20L, 24L)



HTS-AD Table Top Autoclave (20L, 24L, Digital Model)



HTS-C Table Top Autoclave (35L, 50L)



HTS-D Table Top Autoclave (12L, 16L, 18L, 23L, 29L, With pulse-vacuum system)



HVS-BL Vertical Autoclave (35L, 50L, 75L, 100L, 120L, 150L)



HVS-D Vertical Autoclave (Automatic, 35L, 50L, 75L, 100L, 120L, 150L)



HVS-HD Vertical Autoclave (Automatic, Hand wheel type, 35L, 50L, 75L, 100L)



HS-A Horizontal Cylindrical Autoclave (150L, 200L, 280L, 400L, 500L)



HS-B Horizontal Cylindrical Autoclave (150L, 200L, 280L)



WG Series Pulse Vacuum Autoclave



Portable Autoclave (18L, 24L, 30L)

¿Quieres ver nuestros proyectos?

[HAZ CLICK AQUÍ](#)



# Anesthesia Machine



HA-P Portable Anesthesia Machine



HA-3100A Anesthesia Machine



HA-3100B Anesthesia Machine



HA-3200A Anesthesia Machine



HA-3300B Anesthesia Machine



HA-3300C Anesthesia Machine



HA-3600 Anesthesia Machine



HA-3800 Anesthesia Machine



AX-400 Anesthesia Machine



HA-6100 Anesthesia Machine



HA-6100 Plus Anesthesia Machine



HA-6100XS Anesthesia Machine



# Ventilator



HC-01 CPAP



HAC-08 Auto CPAP



HAC-09 Auto CPAP



HAC-30T BiPAP



HV-100C Portable Ventilator



HV-100D Portable Emergency Ventilator



HV-100E Portable Ventilator



HV-100F Portable Ventilator



HV-200 Ventilator



HV-400A Ventilator



HV-400B Ventilator



HV-600A Ventilator

# Ventilator



HV-600B2 Ventilator



HV-600B Ventilator (With High-end Air Compressor)



H-3020B Ventilator



HV-3010 ICU Ventilator



HV-1100 ICU Ventilator



HV-3000 ICU Ventilator



VG70 ICU Turbine Ventilator



AD3000-SPA HFNC Adult High Flow Nasal Cannula



HF7 High Flow Heated Respiratory Humidifiers



HF5 High Flow Heated Respiratory Humidifiers



HV-i1 Bubble CPAP



HV-i2 Bubble CPAP

¿Necesitas ayuda?  
¡Contáctanos ya!

[HAZ CLICK AQUÍ](#)



# Operation Lamp



HLED-2021W-1  
LED Examination Light



HLED-2012L-1  
LED Examination Light



HL-04L 4-Reflector Luminescence Shadowless Lamp



HL-05L 5-Reflector Luminescence Shadowless Lamp



HL-05CL 5-Reflector Luminescence Shadowless Lamp



HL-09CL 9-Reflector Luminescence Shadowless Lamp



HL-09CL 9-Reflector Luminescence Shadowless Lamp



HL-1205CL Luminescence Shadowless Lamp



HDZF-700 Overall Reflection Shadowless Lamp



HDZF-700/500 Overall Reflection Shadowless Lamp



HLED-2036L-3  
LED Operating Lamp

# Operation Lamp



HLED-01 LED Operating Lamp



H2036B-2 Wall LED Operating Lamp



H2036D-2 Ceiling LED Operating Lamp



HLED-500 LED Operating Lamp



HLED-700 LED Operating Lamp



H2036D-2B LED Operating Lamp



HLED-700/500 LED Operating Lamp



HLED-700/500-TV LED Operating Lamp



HLED-M5/3 LED Operating Lamp



HLED-5 LED Operating Lamp



HLED-5/3 LED Operating Lamp



# Operation Table



3002 Multi-Purpose Operating Table (Manual)



HOT-3008 Ordinary Operating Table



3001D Multi-functional Operation Table



3001 Multi-functional Operation Table



HOT-001 Ordinary Operating Table



HDS-99E-1 Electric Operating Table



HDS-99E-4 Electric Image Integrated Operating Table



HDS-99B Electric Operating Table



HDS-99C Electric Operating Table



HDOT-005 Electric Operating Table (Can Be Used With C-arm)



HDS-99C-1 Electric Operating Table



HDS-99A Electric Operation Table (Pneumatic Control)

¿Quieres ver nuestros proyectos?

[HAZ CLICK AQUÍ](#)



# Operation Table



HDS-99D Electric Operation Table



HDS-2000 Electric Operation Table



HDS-2000A Electric Operation Table



HDS-2000B Electric Ophthalmic Operation Table



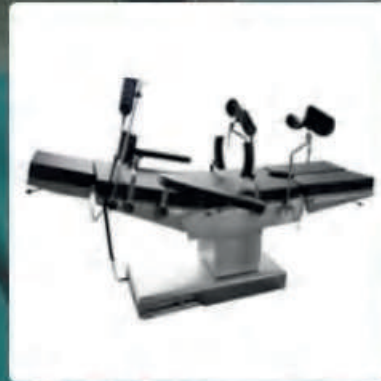
HDS-2000C Electric Operation Table (Cerebral Operation)



HGK-08 Multi-purpose Orthopedics Traction Frame



HDS-3000 Electric Operation Table



HDS-4000 Electric Operation Table



HDS-5000 Electric Operation Table



HC-83A Ordinary Obstetrics Bed



HC-06A Multi-purpose Obstetrics Bed



HC-06 Multi-purpose Obstetrics Bed



# Obstetrics Bed



HDC-99F Electric Obstetrics Bed (With built-in power)



HDC-99A Electric Obstetrics Bed (With built-in power)



HC-04 Electric Obstetric Bed (With foot controller)



HC-09A Electric Obstetric Bed



HDC-B Electric Obstetrics Hospital Bed (With built-in power)



HDJ-A Electric Gynecology Examination Bed (With built-in power)



99F-1 Electric Gynecology Examination Bed



HDJ-B Electric Gynecology Examination Bed



HGEB-01 Gynecology Examination Bed



# Patient Monitor



HP-810 Pulse Oximeter  
(4.3 inch)



HM-8000A Vital Sign Monitor  
(7 inch)



HM-80D Multi-parameter Patient Monitor (8 inch)



HM-80D Multi-parameter Patient Monitor (12.1 inch)



HM-8000F Multi-parameter Patient Monitor (12.1 inch)



HM-8000H Multi-parameter Patient Monitor (15 inch)



HM-8A Multi-parameter Patient Monitor (8.4 inch)



HM-9000N Multi-parameter Patient Monitor (12.1 inch)



HM-8000E Multi-parameter Patient Monitor (12.1 inch)



HDAM-800 Depth Of Anesthesia Monitor (DSI)



HDAM-900 Multi-parameter Patient Monitor (15 inch)



HGM2000 Anesthesia Gas Monitor

¿Necesitas ayuda?  
¡Contáctanos ya!

[HAZ CLICK AQUÍ](#)



# Mother / Fetal Monitor



HM-800G Fetal Monitor



HMF-8 Mother / Fetal Monitor



HM-800F Mother / Fetal Monitor



HM-700 Mother / Fetal Monitor (CTG)



HM-1000F Mother / Fetal Monitor (CTG)



HM-1200F Mother / Fetal Monitor (CTG)



HMF-8P Mother / Fetal Monitor



HMF-1000G Mother / Fetal Monitor (CTG)



HMF-1200G Mother / Fetal Monitor (CTG)



HFD-200 Fetal Doppler



HFD-L6S Fetal Doppler



HVD-310 Vascular Doppler



# Electrosurgical Unit



HE-50A High Frequency Electrosurgical Unit



HE-50D High Frequency Electrosurgical Unit



HE-50E High Frequency Electrosurgical Unit



HE-50F High Frequency Electrosurgical Unit



HE-200A High Frequency Electrosurgical Unit



HE-300 High Frequency Electrosurgical Unit



HE-300A High Frequency Electrosurgical Unit



HE-400 High Frequency Electrosurgical Unit



HE-350 High Frequency Electrosurgical Unit



HP-1D LEEP Surgery System



HP-1E LEEP Surgery System



HP-2F LEEP Surgery System



# Defibrillator



AED7000 Automatic External Defibrillator



HC-7000D Defi-monitor (Biphasic, with AED Mode)



HC-9000A Defibrillator (Monophasic)



HC-8000A Defibrillator (Biphasic)



HC-8000C Defi-monitor (Biphasic)



HC-8000C Defi-monitor (Biphasic, with AED Mode)



HC-8000D Defi-monitor (Biphasic, with SPO2)



HC-8000D Defi-monitor (Biphasic, with AED Mode)



S5 Defi-monitor (Biphasic, AED Mode)



S8 Defi-monitor (Biphasic, AED Mode)

¿Quieres ver nuestros proyectos?

[HAZ CLICK AQUÍ](#)



# Medical Pump



HIP-820 Infusion Pump



HSA510 Infusion Pump



HF-710 Infusion Pump  
(Double CPU)



HIP-3 Infusion Pump



SP750 Infusion Pump



HSA513 Infusion Pump



HSP-950 Syringe Pump



HFA513 Syringe Pump



HFA523 Syringe Pump  
(Double channel)



HSP-810 Syringe Pump



# Medical Pump



HSP-3 Syringe Pump



HF-610 Syringe Infusion



HF-620 Syringe Infusion  
(Double CPU )



HSP-9A/9B/9C Syringe Pump  
(Single, Double, Three Channel)



FP-300 Enteral Feeding  
Pump



HEA313 Single Feeding  
Pump



HEA323 Double Feeding  
Pump



HC618 Blood&Infusion  
warmer



HC600 Fluid Warmer



HF-110 Infusion Warmer

# Suction Machine



H001 Electric Suction Apparatus



H002 Electric Suction Apparatus



H003 Portable Phlegm Suction unit



9E-D Portable Phlegm Suction Unit (AC / DC)



H004 Pedal Suction Apparatus



HLE-C231 Mobile Electric Suction Device



HLE-23N Mobile Electric Suction Device



YX980D Electric Suction Apparatus



602C Nebulizer



CNB69020 Compressor Nebulizer



CNB69012 Compressor Nebulizer (Pediatric)



CNB69016 Compressor Nebulizer

¿Necesitas ayuda?  
¡Contáctanos ya!

[HAZ CLICK AQUÍ](#)



# Infant Incubator



H-600 Infant Incubator (Air Temp)



H-700 Infant Incubator (Air Temp)



H-900 Infant Incubator (Air & Skin Temp)



H-760 Infant Incubator (Air & Skin Temp, LCD Touch Screen)



H-1000 Infant Incubator (Air Temp)



H-800 Infant Incubator (Air Temp)



H-2000 Infant Incubator (Air & Skin Temp)



H-3000 Infant Incubator (Air & Skin Temp)



H-4000 Infant Incubator (Air Temp & with Bilirubin Photo-Therapy)



HT-4000 Transport Infant Incubator (Air & Skin Temp)



B3 Infant Incubator (Air & Skin Temp)



HNT-900 Infant Radiant Warmer

# Infant Products



HNT-1000 Infant Radiant Warmer



HNT-2000 Infant Radiant Warmer



BQ80 Infant Radiant Warmer



HNT-800 Infant Radiant Warmer



H-100 LED Infant Phototherapy Unit



H-200 LED Infant Phototherapy Unit



H-200A Infant Phototherapy Unit (Soft Silicone Material)



H-400 LED Infant Phototherapy Unit



H-360 Infant Phototherapy Unit



HJD Transcutaneous Jaundice Detector



HR-3000A Infant Resuscitator



HR-3000B Infant Resuscitator



# X-ray



HFX-01 Fluoroscopy Machine



HFX-03 Portable X-ray Machine (3.5kW)



HFX-04 Portable X-ray Machine (4kW)



HFX-05 Portable X-ray Machine (5kW, Touch Screen)



HX100-POR Portable X-ray Machine (5kW, 8kW, Touch Screen)



HX-50G Mobile X-ray Machine (5kW)



HXR-A Stationary X-ray System (20kW, 32kW, 50kW)



HFX-05D Digital Mobile X-ray System (5kW, Touch Screen)



HX100-POR Digital Mobile X-ray System (5kW, 8kW)



HFX-6000D Digital Mobile X-ray System (32kW)



HDR Stationary Digital X-ray Radiography system (50kW, 65kW)



HDR-U U-arm Digital X-ray Radiography system (50kW, 65kW)

¿Quieres ver nuestros proyectos?

[HAZ CLICK AQUÍ](#)

# X-ray



HCX-10A/D C-arm X-ray system



HCX-20/30A C-arm X-ray system



HCX-20/30D C-arm X-ray system (Digital)



HM-9800B Mammography System



HM-9800D Mammography System



HDM-156 Mammography System (Digital)



Venu 1717X Wired X-ray Flat Panel Detector



Mars 1417V Wireless X-ray Flat Panel Detector



Mars 1717V Wireless X-ray Flat Panel Detector



X-ray Film Printer



X-ray Film Processor



X-ray Protective



# Hospital Furniture



E501 5-Function Electric Hospital Bed



E502 5-Function Electric Hospital Bed



E302 3-Function Electric Hospital Bed



A109 Single Crank Manual Hospital Bed



A209 Two Crank Manual Hospital Bed



A302 3 Crank Manual Hospital Bed



A002 Stainless Steel Flat Bed



YXH-3A Aluminum Alloy Ambulance Stretcher



YXH-6A Patient Transfer Stretcher



HST-07 Patient Transfer Stretcher



DP-C107 ABS Bedside Cabinet



AT-62512B ABS Anesthesia Trolley



# Hospital Furniture



HET-75001B ABS  
Emergency Trolley



Stainless Steel Trolley  
(Customizable)



Stainless Steel Flat  
Examination Table



DP-BC011 Flat Child Bed



HDP-B3 Stainless Steel  
Medicine Cabinet



HSY-01 Infusion Chair



ABS Mobile Dining Table



HLE-001 Standing Frame



YXH-E2-5 Stair Stretcher  
Chair



Nurse Stool



Wheelchair Bed



Infusion Stand

¿Necesitas ayuda?  
¡Contáctanos ya!

[HAZ CLICK AQUÍ](#)



# B/W Ultrasound Scanner



HBW-2 B/W Ultrasound Scanner



HBW-3 B/W Ultrasound Scanner



HBW-3 Plus B/W Ultrasound Scanner



HBW-4 B/W Ultrasound Scanner



HBW-6 B/W Ultrasound Scanner



HBW-6P B/W Ultrasound Scanner (Windows 7 OS)



HBW-7/9 B/W Ultrasound Scanner (15" LED Display)



HBW-10 Plus Ultrasound Scanner



HBW-11 Plus B/W Ultrasound Scanner (Window OS)



HBW-100 B/W Ultrasound Scanner (Window OS, Touch screen)



HBW-12 B/W Ultrasound Scanner (15" Touch screen)



BProbe-2 4D Wireless Bladder Scanner (Water-proof)



# Color Doppler



E2 Color Doppler Ultrasound System



HUC-180 Color Doppler Ultrasound System (Windows 7)



HUC-200 Color Doppler Ultrasound System (Optional 4D)



HUC-250 3D color Doppler Ultrasonic System (Optional 4D)



HUC-260 Color Doppler Ultrasound Scanner



HUC-550/560/570 Color Doppler Ultrasound Scanner (Optional 4D)



HUC-600 color Doppler Ultrasonic System (Optional 4D)



HUC-600P Color Doppler Ultrasonic System (Optional 4D, 19" TFT monitor)



HUC-700 Color Doppler Ultrasonic System (Optional 4D)



HUC-800 Color Doppler Ultrasonic System (Optional 4D)



HUC-820 Color Doppler Ultrasonic System (Optional 4D, 19" LED monitor)



HUC-900 Color Doppler Ultrasonic System (Optional 4D, 19" monitor)



# High-end Color Doppler



HUC-950 4D Color Doppler Ultrasound System



HUC-960 4D Color Doppler Ultrasound System (21.5" Medical Display)



P20 Color Doppler Ultrasound System



P25 Color Doppler Ultrasound System



S8 Exp Color Doppler Ultrasound System



S11 Plus Color Doppler Ultrasound System



S12 Color Doppler Ultrasound System



S22 Color Doppler Ultrasound System



S50 Color Doppler Ultrasound System



S60 Color Doppler Ultrasound System



HJ3000 Ultrasound Bone Densitometer



HTCD Transcranial Doppler

¿Quieres ver nuestros proyectos?

[HAZ CLICK AQUÍ](#)



# Biochemistry Analyzer



SCA3000M Semi-auto Chemistry Analyzer



SCA3000B Semi-auto Chemistry Analyzer



SCA3000P Semi-auto Chemistry Analyzer



SCA3100 Semi-auto Chemistry Analyzer



FCA161 Fully-auto Chemistry Analyzer



FCA261 Fully-auto Chemistry Analyzer



FCA301 Fully-auto Chemistry Analyzer



FCA401 Fully-auto Chemistry Analyzer



FCA800 Fully-auto Chemistry Analyzer



M4 Dry Chemistry Analyzer



SD1 Dry Blood Chemistry Analyzer



# Lab Analyzer



HUA-100 Urine Analyzer



HUA-90M Urine Analyzer



HUA-300 Urine Analyzer



HUS-2000 Urine Sediment Analysis System



FA-562 Fully Automated Feces Analyzer



H1100 Immunoassay analyzer



SPA-100 Specific Protein Analyzer



EA-200 ESR Analyzer



H1000+ Real Time PCR System



QPCR-96 Real-Time PCR System



Linegene 9600 Plus Real Time PCR System



HME-32 Automated Nucleic Acidextractor (32 or 96 samples)



# Hematology Analyzer



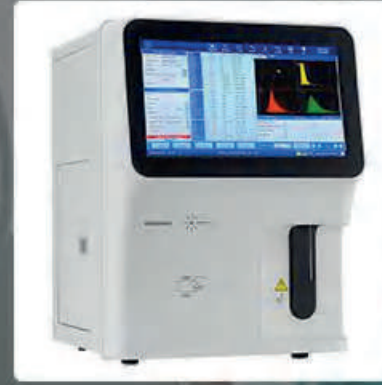
HMA-3100 3 part Hematology Analyzer



HMA-7021 3 part Hematology Analyzer



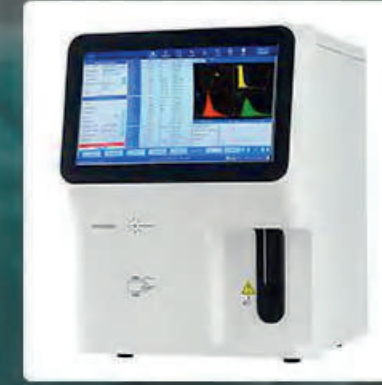
HMA-3000 3 part Hematology Analyzer



HMA-7318 3 part Hematology Analyzer



HMA-5000 5 part Hematology Analyzer



HMA-7518 5 part Hematology Analyzer



WBC Analyzer



HB Hemoglobin Analyzer



HIMS972 Electrolyte analyzer



HEA-996 Electrolyte analyzer



CA2000 Coagulometer Analyzer



CA2000B Coagulometer Analyzer

¿Necesitas ayuda?  
¡Contáctanos ya!

[HAZ CLICK AQUÍ](#)



# Microscope



HXSZ-107BN Binocular Biological Microscope



HXSZ-107TN Trinocular Biological microscope



HXSZ-107TD Biological Microscope



YSX180 Operation Microscope



HXT-X-5B Surgical Microscope



HXT-X-6A Surgical Microscope



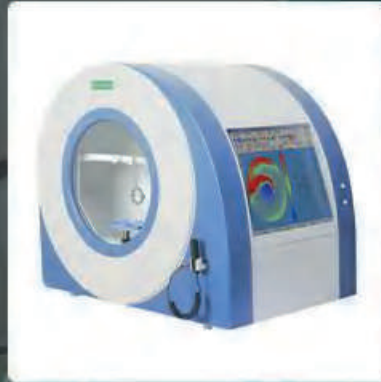
SLM-1ER Slit Lamp



SLM-2ER Slit Lamp



APS-6000BER Auto Perimeter



APS-6000CER Auto Perimeter



HRK-4000 Auto Refractometer (8-inch TFT touch screen)



HR9000 Auto Refractometer (5.7 inch Color LCD)

# Dental X-ray Unit



HC-10D Dental X-ray Unit



HC-10D Plus Dental X-ray Unit



HC-10B Dental X-ray Unit



HC-10B Plus Dental X-ray Unit



HLX-8 Portable Dental X-ray Unit



HLX-10 Portable Dental X-ray Unit (With Battery)



MX-RAY Portable Dental X-ray Unit (With Battery)



HAND-RAY Portable Dental X-ray Unit (With Battery)



HC-X5 Portable Dental X-ray Unit (With Battery)



HC-X7 Portable Dental X-ray Unit (With Battery)



Pluto Dental X-ray Sensor



HPX-2000 Panoramic Dental X-Ray System



# Dental Equipments



H-X9010D Pro Digital Panoramic Dental X-ray Unit



Samrt 3D Dental CBCT



HC-02 Dental X-ray Film Processor



HXP-D Automatic Dental Film Processor



HDSU-M400 Dental Suction Unit



HDU-P204 Dental Unit with Air Compressor



HDU-P209 Dental Unit with Air Compressor



HDU-P212 Dental Unit with Air Compressor



HDC-N1 Dental Chair



HDC-N2+ Dental Chair



HDC-S3 Dental Chair



HDC-S6 Dental Chair

¿Quieres ver nuestros proyectos?

[HAZ CLICK AQUÍ](#)

# Endoscope



HBL-II/D Bulb Laryngoscope for Infant & Child



HBL-II/G Fiber Optic Laryngoscope for Infant



HBL-I/D Bulb Laryngoscope for Adult



HBL-I/G Fiber Optic Laryngoscope for Adult



HBL01-III Video laryngoscope



HVL-2 Video Laryngoscope



HBL01-II Video Laryngoscope



HKR-4/3.8mm Video Laryngoscope



YDJ-II Colposcope



HKN-2100 Portable Video Colposcope



HKN-2000 Handheld Video Colposcope



HKN-2200 Video Colposcope



# Endoscope



HPB-8 Portable Bronchoscope



HMV-200+HMV-400 Video Gastroscope & Colonoscope (HD-1080P)



HFB-9 Video Bronchoscopy/Cystoscopy/Nasopharyngoscope



HAE-2000 Arthroscope Set



HCE-3000 Cystoscope Set



HED-2000 ENT Endoscope Set



HHE-7000 Hysteroscope Set



HLE-8000 Laparoscopy Set



HVM-TP102 Otoscope & Ophthalmoscope Set



OT10 Rhinoscope



OTP 10L E.N.T Examination & Diagnostic Set



Fiber Optic Wall mounted Diagnostic set



# ECG



HE-01C ECG Machine (Single channel)



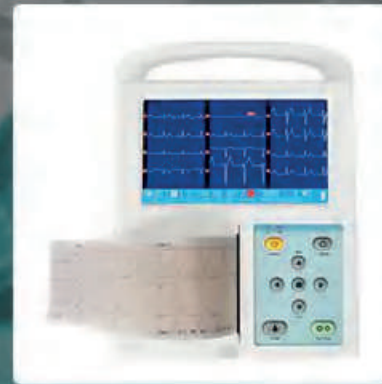
HE-03A ECG Machine (3 Channel)



HE-03B ECG Machine (3 Channel)



HE-03C ECG Machine (3 Channel, Alphanumeric keyboard)



HE-03D ECG Machine (3 Channel)



HE-03E ECG Machine (3 Channel, 7" touch screen)



HE-06A ECG Machine (6 Channel, 7" touch screen)



HE-06B ECG Machine (6 Channel)



HE-12A ECG Machine (12 Channel)



HE-12A1 ECG Machine (12 Channel, 4400mAh)



HE-12B ECG Machine (12 Channel, 9" touch screen)



HE-12C ECG Machine (12 Channel, 9" touch screen, with USB)

¿Necesitas ayuda?  
¡Contáctanos ya!

[HAZ CLICK AQUÍ](#)



# ECG&EEG&EMG



HE-03H / 06H ECG Machine  
(3 Channel / 6 Channel)



HE-12E ECG Machine (12  
Channel, 9" touch screen,  
with USB)



HE-301 ECG Machine (3  
Channel)



HE-601 ECG Machine (6  
Channel)



HE-03G ECG Machine (3  
Channel)



HE-06C ECG Machine (6  
Channel)



HE-12D ECG Machine (12  
Channel, 9" touch screen,  
with USB)



HSECG 8000S Stress ECG  
Analysis System



TLC9803 Dynamic ECG  
System (3 Channel, 24 hours  
Holter ECG)



TLC5000 Dynamic ECG  
System (12 Channel, 24  
hours Holter ECG)



TLC6000 Dynamic ECG  
System (12 Channel, 48  
hours Holter ECG)



KT88 EEG & EMG Machine  
(32 Channel)



# Oximeter & Sphygmomanometer



CMS50D Pulse Oximeter  
(With CE&FDA)



HP-80A Pulse Oximeter



80A Pulse Oximeter (With  
CE)



WLX-503 Pulse Oximeter



KI Pulse Oximeter  
(For Child, Pediatric)



PC01 Handheld Oximeter



PC100 Handheld Oximeter  
(optional: NIBP, TEMP, PR,  
ECG, ETCO2)



HGM-S50 Handheld  
Multi-gas Monitor



B1681 Blood Pressure Moni-  
tor



W1681 Blood Pressure Moni-  
tor



ABPM50 24 hours BP Holter



# Dialysis Machine



H-2028A Double Pump Hemodialysis Machine



H-2028M Single Pump Hemodialysis Machine



HD-4000A Single Pump Hemodialysis Machine



H-5000 CRRT (Five pumps three scales)



H-5000A CRRT (Six pumps four scales)



H-5000B CRRT (Four pumps two scales)



YD-310 Electric Dialysis Chair



YD-810 Electric Dialysis Chair



H-DC120A Electric Dialysis Chair



YD-CS Electric Dialysis Chair

¿Quieres ver nuestros proyectos?

[HAZ CLICK AQUÍ](#)

# Oxygen Concentrator



JAY-5/8/10 Oxygen Concentrator (5/8/10LPM)



HO2-8AM Oxygen Concentrator (8LPM)



HO2-10AH Oxygen Concentrator (10LPM)



JAY-3BW Oxygen Concentrator (3LPM)



JAY-5BW Oxygen Concentrator (5LPM)



HO2-3AM Oxygen Concentrator (3LPM)



JAY-5AW Oxygen Concentrator (Low Noise 5LPM)



HO2-15AH Oxygen Concentrator (15LPM)



HO2-20AH Oxygen Concentrator (20LPM)



Mini Oxygen Supply System



HOY-1 Oxygen Flow Meter



JAY-1 Portable Oxygen Concentrator (5LPM)



# Vet Surgical Equipments



WT-02 Stainless Steel One-sided Tilt Veterinary Operating Table



WVOT-001 Stainless Steel Veterinary Operating Table



WT-05 Stainless Steel Veterinary Operating Table



WVOT-002 Stainless Steel Veterinary Operating Table



WVOT-003 Stainless Steel Veterinary Operating Table



HA-V Veterinary Portable Anesthesia Machine



WT-6C Veterinary Anesthesia Machine



WTK-100VET Infusion pump



WTK-400VET Syringe pump



WTP6100VET Veterinary Monitor



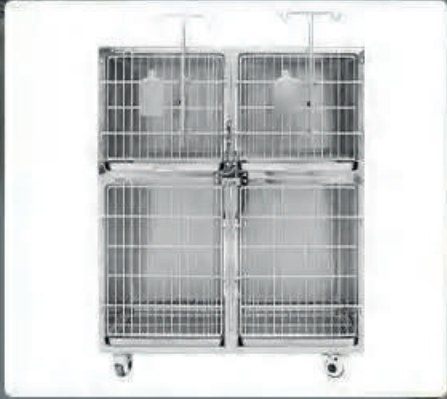
WTP6000VET Veterinary Monitor



WTP9000 Veterinary Monitor



# Veterinary Cage & Incubator



WTC-01 Stainless Steel Dog Cage



WTC-02 High-Grade Stainless Steel Cat Cage



WTC-03 Stainless Steel Cat Cage



WTC-07 Veterinary Cage with Oxygen Cage



WT-46 Veterinary Cage with Oxygen Cage



WT-45 Stainless Steel Dog Cage



WUC1901 Pet Incubator ICU Cage



WOX-820V Hyperbaric Oxygen Treatment Chamber



WUC1801 Pet Incubator



WUC1803 Pet Incubator (Dual heating and ventilation system)

¿Necesitas ayuda?  
¡Contáctanos ya!

[HAZ CLICK AQUÍ](#)



# Veterinary Ultrasound Scanner



HV-1 Veterinary Ultrasound Scanner (5.6inch LED display)



HV1 Plus Mechanical Sector Ultrasound Scanner



HV-5 Veterinary Ultrasound scanner (7" screen, only 1Kg)



HV-7/9 Laptop Ultrasound Scanner



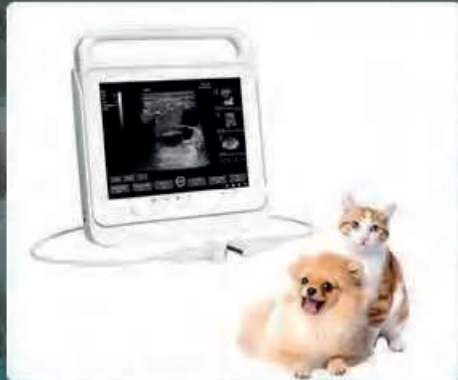
HV-10 Veterinary Color Doppler Ultrasound Scanner



HV-11 Laptop B/W Ultrasound Scanner



MX5 B/W Portable Ultrasound Probe (Main-board 15-2 Mhz, 128 elements)



HV-50C Touch Screen Color Doppler Ultrasound Scanner



S3 Wireless Veterinary Ultrasound Probe



S9 Wireless Veterinary Ultrasound Probe



# Veterinary X-ray



WTX-04 4KW Portable X-ray



WTX-05 5KW Portable X-ray



WTX-50 Portable X-ray



WTX-16 16KW X-ray



WTX-05DR 5KW Digital X-ray



WTX-20DR 20KW Digital X-ray

# Pet Treadmill



WT-J100 Fight Cock Treadmill



WT-C100 Dog Treadmill  
(Speed range: 0.8–6km/h )



WT-C300WS Dog Treadmill  
(Speed range: 0.8–12km/h )



WT-C350S Dog Treadmill



WT-C280 Underwater Treadmill



WT-C480 Underwater Treadmill



# Veterinary Beauty Products



WVT-01 Beauty Table  
(Waterproof Fiber Table Top)



WVT-02 Pet Grooming Table  
(Adopt Air Spring To Lift)



WT-61 Pet Grooming Table  
(Hydraulic Pump Lifting)



WT-62 Pet Grooming Table  
(Hydraulic Pump Lifting)



WT-10 Dog Bathtub  
(304 stainless steel)



WT-11 Pet Sliding-door  
Bathtub (304 stainless steel)



WT-12 Pet Sliding-Door  
Bathtub With Hair Dryer  
(304 Stainless Steel)



WT-14 Pet Swimming Pool  
(With Spa Function)



WT-15 Pet pet swimming pool  
(304 Stainless Steel)



WB-03 Luxury Pet SPA Bath  
Tub (ABS And Acrylic Materi-  
als)



WB-04 Luxury Pet SPA Bath  
Tub (ABS and acrylic materi-  
als)



WB-05 Luxury Pet SPA Bath  
Tub (ABS and acrylic materi-  
als)

¿Quieres ver nuestros proyectos?

[HAZ CLICK AQUÍ](#)